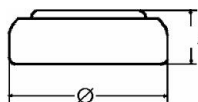


Type Number..... 357
Designation IEC..... SR 44
System..... Silver oxide/ Zinc /
 KOH - Electrolyte



Nominal Voltage..... 1,55 V
Typical Capacity C..... 143 mAh
 Load 6,8 kOhm, at 20°C down to 1.2 V

Weight (approx.)..... 1,98 g
Volume..... 0,51 ccm

Temperature Ranges	min	max.
Storage.....	0°C	60°C
Discharge.....	0°C	60°C

Dimensions	min	max.
Diameter.....	11,25	11,6
Height (A/B).....	5,00	5,4

Segment..... Watch

Typical Capacities (at 20°C)

Discharge Type	Load	End Voltage:	1.2V
Continuous 24h/d, 7d/w	6800 Ω	Time: Capacity: Energy:	700 h 143 mAh 199 mWh

No publication or circulation of data to third parties without consent of VARTA Consumer Batteries

All Data contained herein is for single cells For battery applications, performance data may vary from single cell data, depending on specific battery configuration