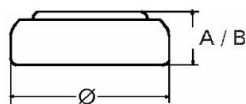


Type Number..... 399
Designation IEC..... SR 57
System..... Silver oxide/ Zinc /
 KOH - Electrolyte



Nominal Voltage..... 1,55 V
Typical Capacity C..... 42 mAh
 Load 13 kOhm, at 20°C down to 1.2 V

Weight (approx.)..... 0,75 g
Volume..... 0,17 ccm
Coding..... Manufacturing Month/Year

Temperature Ranges min max.
 Storage..... -10°C 65°C
 Discharge..... -10°C 65°C

Dimensions min max.
 Diameter..... 9,15 9,5
 Height (A/B)..... 2,4 2,7

Segment..... Watch/High Drain

Main Applications..... Watch
 Photo
 Electronic

Typical Capacities (at 20°C)

Discharge Type	Load	End Voltage: 1.2V
Continuous	13000 Ω	Time: 375 h
24h/d, 7d/w		Capacity [mAh]: 42
Current [µA]	120	Energy [MWh]: 67

No publication or circulation of data to third parties without consent of VARTA Consumer Batteries

All Data contained herein is for single cells For battery applications, performance data may vary from single cell data, depending on specific battery configuration