

# CAMOUFLAGE



Trail Camera  
EZ4G-PRO  
Instruction Manual



# TABLE OF CONTENTS

1. QUICK START
2. WHOLE VIEWS AND DETAILS OF THE CAMERA
3. INTRODUCTION
4. OPERATION LIST
5. SPECIFICATIONS
6. TROUBLESHOOTING
7. WARRANTY
8. ATTENTION

# CAMOUFLAGE WEBSITE

Scan the QR code to go directly to our website, where you'll find a wide range of videos, guides, and product tutorials. Quickly and easily access all the information you need to make the most of your product!



# 1. QUICK START

## 1.1 WHAT IS IN THE BOX?



- 1x Trail Camera
- 1x USB Cable
- 1x Mounting strap
- 1x Antenna
- 1x User Guide

# 1. QUICK START

## 1.2 HOW TO GET THE CAMERA READY?

### 1. Insert the batteries

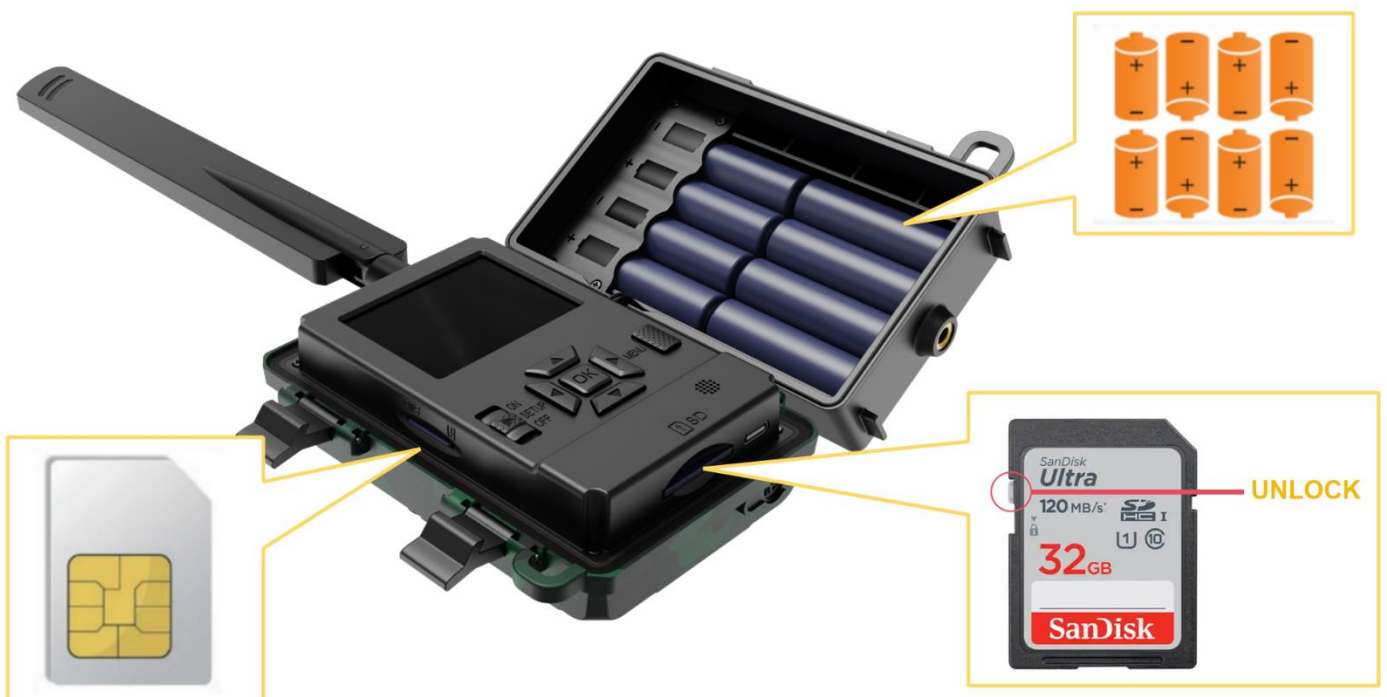
Open the camera house and insert the batteries as electrodes marked in the battery case.

Note: 8AA Alkaline or Ni-MH are recommended. For better performance, please choose the "Battery Type" of the batteries.

### 2. Insert the SD card

Note: 8-32GB SD card is recommended. Please insert it in the correct direction as marked.

### 3. Mount the Antenna & Insert the SIM card



# 1. QUICK START

## 1.3 HOW TO SET UP THE CAMERA?

### 1. Power on the Camera

Switch to ON; the camera is ready to work upon motion triggers (the screen will not light up upon "ON"). If you prefer default settings, you can mount it to work directly after this. Please refer to page 3 below for default settings in red letters.

### 2. Configure Camera Settings

Switch to SETUP, screen will light up. Press the MENU key, you will enter the menu to view & change settings. Please press the arrow keys for navigation and the OK key to confirm settings.

**Note: please switch to ON to enable the camera to work after setups.**

### 3. How to Connect the Camera to the Network?

Different from non-cellular models, the 4G model has a signal "Searching" process when you switch the power key to SETUP.

If it comes with a signal bar and no other pop-up, it means the network is automatically connected; by then, you only need to fill in phone numbers and emails in "Send to" to receive photos upon motion triggers.

If it comes with a pop-up "SIM Auto Match failed...", please go to "SIM Auto Match" under "4G", select "Manual", and fill in local operator APN details in "Manual Setup", the camera will connect to the network to send photos.

# 1. QUICK START

## 1.4 CAMERA DEFAULT SETTINGS IN RED LETTER

<b>Cam</b>	
Camera Mode	Photo/Video/PIC+Video
Image Size	8M/12M/24M
Multi-Shot	1/2/3/4/5P
Video Size	FHD (10sec), HD(10sec)
Night Mode	Max. Range Balanced Min. Blur
Flash Power	High/Low
Cam ID	ON/OFF
GPS	OFF/ON
Max Num/Day	Unlimited 1~99
4G Setup	Auto/Manual
<b>PIR</b>	
PIR Switch	OFF/ON
PIR Sensitivity	High/Middle/Low
Delay	OFF/ON
Time Lapse	OFF/ON
Timer1	OFF/ON
Timer2	OFF/ON
Remote Control	OFF/Real Time/ Delay0.5/1/2/3/4/6/12/24H
<b>Other</b>	
Language	English
Stamp	OFF/ON
Battery Type	Alkaline/Ni-MH/Li
Frequency	50Hz/ 60Hz
SD Cycle	OFF/ON
Password	OFF/ON
Reset	No/ Yes
FW Update	Software/ Module
QR Code	Only appear after inserting SIM card
About	Ver, IMEI, MCU, MOD

## 2. WHOLE VIEW AND DETAILS OF CAMERA

### 2.1 FIGURE 1: FRONT VIEW OF CAMERA

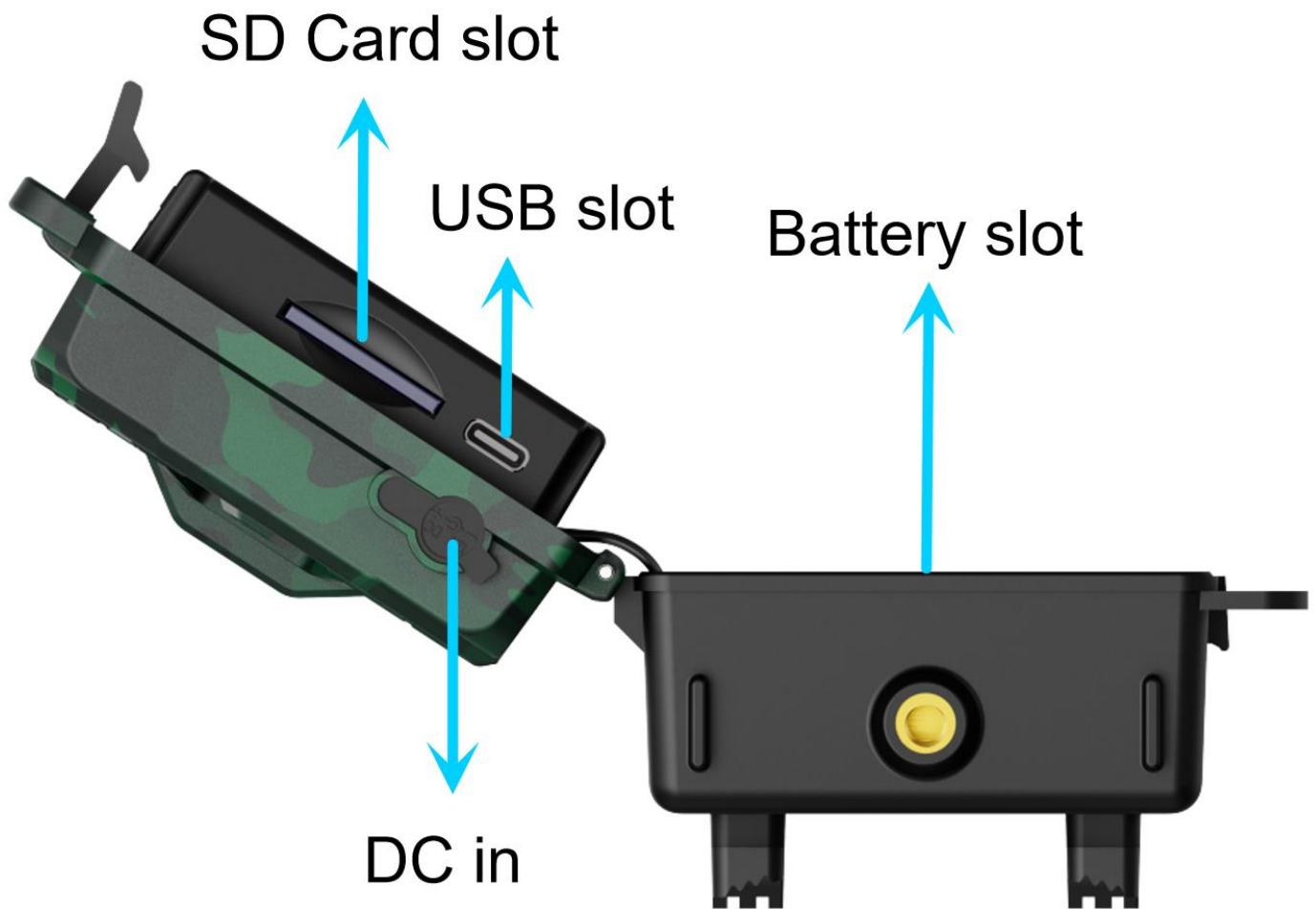




## 2. WHOLE VIEW AND DETAILS OF CAMERA

### 2.2 FIGURE 2: BOTTOM VIEW OF CAMERA

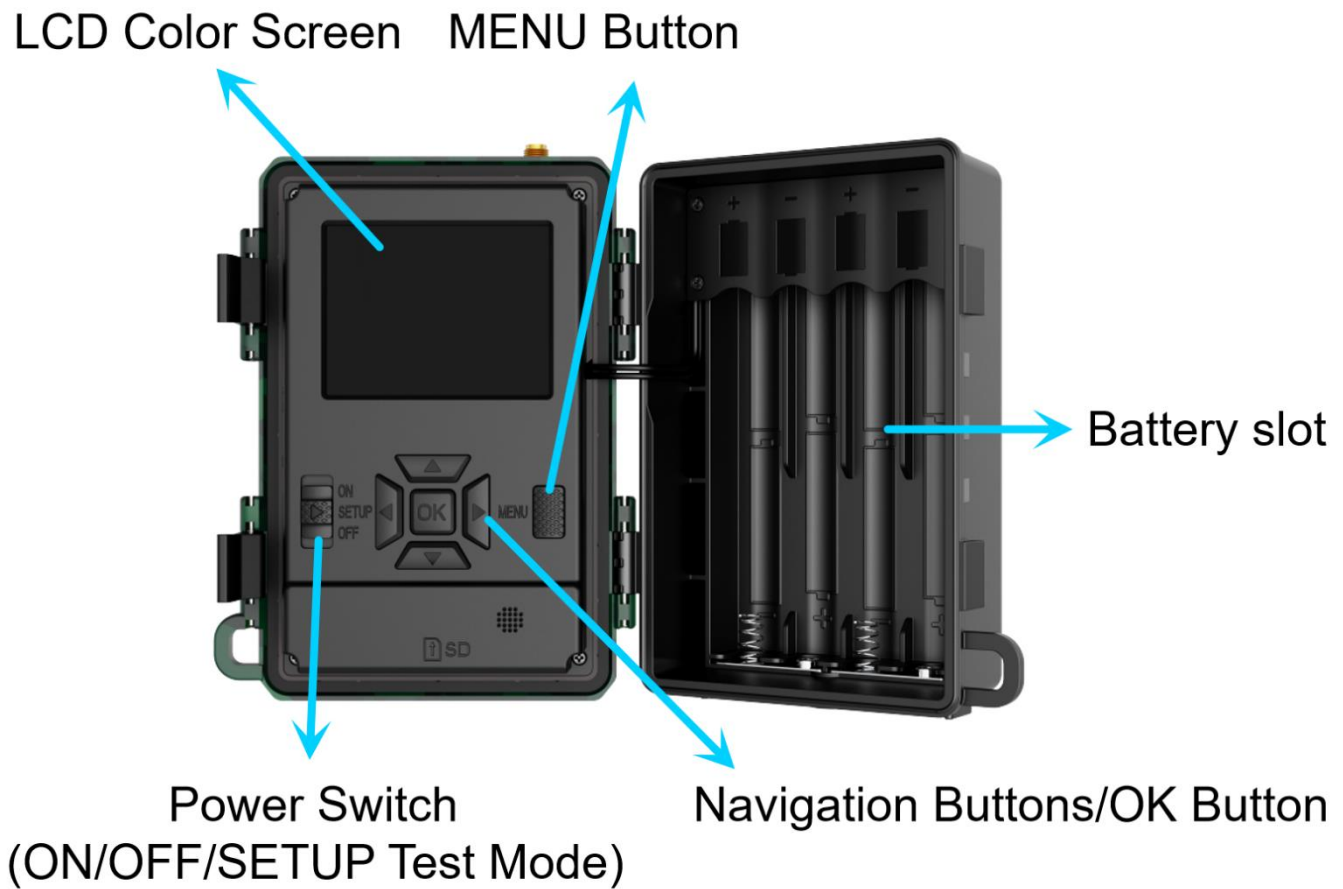
SIM CARD Golden Part Faces Front Housing Side



## 2. WHOLE VIEW AND DETAILS OF CAMERA

### 2.3 FIGURE 3: INTERNAL, SIDE AND BACK VIEW OF CAMERA

SIM CARD Golden Part Faces Front Housing Side



## 3. INTRODUCTION

With contents in previous pages, believe you've already got a brief idea about how this camera works. Before more details are presented, here we want to thank you for choosing one of our easy operation highly qualified products. You now may enjoy the excellence reflected in this series product. This 24MP HD digital camera was R&D by our diligent and smart engineers based on feedback and requirements from customers globally. May you also enjoy and adore this product as we do. Our company is always open-minded with willing to adopt creative ideas from you.

### 3.1 FULLY FUNCTIONALITY INTRODUCTION

Besides all the functions you may experience from any other similar cameras. This one is aimed to offer you a stable quality product using experience with many extraordinary features, like SIM setups auto-match, daily report, remote ctrl with APP (IOS & Android), 20 meters(65 ft) invisible real night vision ability, 0.4 seconds trigger time, and 1 photo/sec (up to 5 photos per trigger multi-shot to capture the whole track of object (anti-the evidence), user-friendly operation menu, etc.

### 3.2 POWER SUPPLY

Please use a 9-12V power supply to ensure the camera well performance of all functions.

### 3. INTRODUCTION

#### A. BATTERIES

The camera runs on 8AA-size batteries and can work with alkaline and high-quality NiMH rechargeable batteries. However, we suggest running the camera with NiMH batteries only as the performance of alkaline batteries is much poorer than NiMH batteries. Pls also choose the battery type you're using in the menu option "Battery Type" to reach longer operation time.

Batteries should be inserted with the correct electrode position as marked in the battery case. Upside-down battery electrodes may cause device malfunction. Also, we strongly recommend changing the batteries when the power icon on the camera screen or photo stamp is empty.

**Note: Don't mix battery types! Different batteries to be used in the camera may cause permanent damage which also violates warranty policy!**

Due to different settings, object activities within the camera detection zone, different brands and quality of batteries, and using environment, etc; we're not able to list out an exact number of photos and videos that the camera can achieve. So given table below only shows an approximate number of photos or videos the camera can take with 8AA alkaline batteries; better performance can be given by 8 AA rechargeable NiMH batteries.

4G OFF 8AAAlkaline Batteries					
Photos shot per day		Working time	Video clips shot per day		Working time
IR LEDs On					
Max.Range	100 pics	52 days	Video—10s	10 clips	48 day
Balanced	100 pics	48 days			
Min.Blur	100 pics	43 days			
IR LEDs Off					
Photo	100 pics	73 day	Video—10s	10 clips	103 day

## 3. INTRODUCTION

### **B. SOLAR PANEL**

To give users a better user experience, our engineers designed this camera to work with most standard 12V/2A lithium battery built-in solar panels. Solar panels can't charge the batteries when using in-camera battery cases.

### **C. POWER ADAPTOR—SECURITY SURVEILLANCE PURPOSE**

This camera can also be powered by an external 12V/ 2A DC adapter. When using the power adapter, remove the AA-size batteries. Electrical power is recommended for security purposes.

## 3. INTRODUCTION

### 3.3 SD CARD SELECTION

Using a memory card is required to operate the camera. When the camera is "ON" and no memory card is used, the screen displays "No card". The SD slot of the camera has a 32 GB memory capacity. Before inserting or removing the memory card, the camera must be turned "OFF". Failing to do so may cause loss of or damage to the pictures/ videos already recorded from the memory card. When the SD card is full, the viewing screen shows "Memory Full". The following data shows an approximate quantity of photos or videos that can be recorded by the camera depending on the memory card capacity.

The chart below will show you the approximate capacity of different size SD cards. Pls, check to see which size card can fit your needs best.

SD Size Capacity	8 GB	16 GB	32 GB
Photo (pictures)			
8MP	3686	7884	15974
12 MP	2835	6065	12288
24 MP	1368	3504	10965099
HD	03:18:15	07:04:43	14:09:16
FHD	01:42:27	03:39:21	07:13:52

## 3. INTRODUCTION

### 3.4 USB CONNECTION

When the camera is connected via a USB cable; the screen displays "MSDC", press "Menu" once, and "MSDC" turns to "PC Cam", The camera now can be used as a PC camera; press "Menu" again, camera exits PC camera mode.

### 3.5 ATTENTION

1. Insert the SD memory card correctly, the camera does not support SD card hot swap (insertion).
2. Please use high-quality AA batteries to prevent battery cells from corrosion by leaked acid.
3. Use this camera's right adaptor (12V/2A) to supply power, and do not invert the electrode when put in batteries.
4. In Test mode, the camera will automatically power off in 3 minutes if no keypad is touching.
5. Don't interrupt the power supply during the firmware upgrade, please deliver it back to the factory if the device doesn't work after upgrading.
6. Do not frequently insert or pull out the SD card and battery or plug in and out the adaptor when the camera is on.
7. Do not have any floating objects, such as leaves, strings, or ribbons in the 3M motion detection zone of cameras, to avoid mistaking photographs or videos.
8. Do not keep the camera next to hot irrelevant objects, air conditioner exhaust vents, lights, etc. to avoid mistaking photos or videos.
9. Camera is with a 100° FOV lens and 60pcs IR LEDs. To ensure these 60pcs IR LEDs can give enough flash high-quality AA batteries must be applied accordingly to deliver enough amperage to power the illuminator consistently in dark environments.

## 3. INTRODUCTION

### 3.6 KEY FEATURES

1. 0.4 seconds trigger speed;
2. 100°FOV lens; 80°PIR angle;
3. 24MP/ 1080P@30FPS;
4. Programmable 8/12/24 Megapixel high-quality resolution;
5. 60pcs invisible IR LEDs offer 20 meters (65 feet) real night vision distance;
6. crystal clear day & night photo/video quality;
7. 1 photo burst per second to get full moving track of the object;
8. Support multiple functions: adjustable PIR sensitivity, Multi-shot (1~5 photos per trigger), programmable delay between motions, Time Lapse, Timer, stamp of (camera ID, date/time, temperature, moon phase) on every single photo;
9. Available operation temperature: -20°C to 60°C;
10. Built-in 2.4" TFT color screen;
11. APP available in the IOS & Android APP store



## 4. OPERATION LIST

### 4.1 VIDEO/PHOTO PLAYBACK

Turn the "Power Switch" to the SETUP position to enter test mode, press the arrow button "↑" to enter Playback; press "←" and "→" for selection, and "OK" to play photo/video.

1. Press the button "Menu" again to exit.
2. In Playback Mode, press the "↓" button to delete files or format an SD card; press "Menu" again to exit.

### 4.2 DELETE

- A. Delete one: delete selected photo/video;
- B. Press "OK" to choose, press "↑" and "↓" for selection, "Yes" to confirm, and "No" to exit the previous page.
- C. Delete All.

### 4.3 FORMAT OF SD CARD

- A. No
- B. Yes: to format SD card via camera.
- C. Press "OK" and "MENU" for selection, "Yes" to confirm, and "No" to exit the previous page.

### 4.4 AUTO POWER OFF

In Test mode, the camera will automatically power off in 3 minutes if there is no keypad touching. Please manually turn it as if you want to do some further configuration.

Note: The camera stays in "Test" mode if the camera is in the Menu configuration pages.

### 4.5 OPERATION MENU

Test mode, Press "Menu" once to enter the camera setting menu; to navigate the setting interface by pressing "←", "↑", "→", or "↓", press "OK" for selection, "Menu" to exit to previous page, and "Menu" to switch alpha/digits/ symbols.

Note: For some settings, the user needs to press "Menu" to save & exit the configuration after pressing "OK" to confirm; (Cam ID, Deley, Time Lapse, Timer, Password)

## 4. OPERATION LIST

Cam	
Settings	Programmable Options
Cam Mode	<p>Photo, Video, PIC+VIDEO</p> <ol style="list-style-type: none"> <li>1) Photo: The camera shoots photos only based on configured Multi-shot &amp; Image Size;</li> <li>2) Video: The camera shoots videos only based on the configured Video Length/Size;</li> <li>3) "PIC+VIDEO", the camera shoots photo(s) first, then video upon same trigger event based on Video Length/Size and Multi-shot/ Image Size user configured;</li> </ol>
Image Size	8MP(3840*2160),12MP(4608*2592),24MP (6144*3456)
Multi-shot	Programmable 1~5 photos per trigger
Video Size	FHD-1080P (10sec), HD-720P(10sec)
Night Mode	<ol style="list-style-type: none"> <li>a) Min. Blur: Short exposure time to minimize motion blur for better image quality; shortened IR flash range;</li> <li>b) Max. Range: Longer exposure time to extend IR flash range for better night vision; lower image quality;</li> </ol> <p>Balanced: a combination of the above 2 options;</p>
Flash Power	<p>High/Low</p> <p>High: IR LEDs will be fully powered in a dark environment</p> <p>Low: IR LEDs will be half-powered in a dark environment,</p>

## 4. OPERATION LIST

Cam ID	<p>OFF/ ON</p> <p>Select "ON", and press "OK", to set 12 digits/ alphabets for each camera. Such a function can help users to identify which photos are from where and which camera.</p>
GPS	<p>ON/OFF</p> <p>With GPS turned ON, GPS info will be shown on the picture stamp;</p> <p>Note: If the GPS signal is weak around, GPS info will not be shown on the stamp until the GPS signal gets stronger.</p>
Max Num/Day	<p>Default: unlimited;</p> <p>Optional: 1~99</p> <p>i.e.: user chooses 50, then the camera will only send (Photos/Videos) 50 times every day. Each time, the camera will send to all entered emails/ phones/ FTP accounts. All the rest photos/ videos upon triggers will only be stored in SD card.</p>
4G Setup	<p>Auto</p> <p>Manual Setup</p>

## 4. OPERATION LIST

PIR	
Settings	Programmable Options
PIR Switch	<p>OFF/ON</p> <p>Note:</p> <p>a) th PIR Switch off, the camera will not be able to take photos/ video per motion;</p> <p>b) With the PIR Switch on, the camera can take photos/ videos per motion even when Time Lapse is ON.</p>
PIR Sensitivity	<p>High, Middle, Low</p> <p>Higher sensitivity is 1) more sensitive to movements by smaller subjects; 2) longer detection distance; 3) easier for the sensor to detect the difference between body heat and outdoor temperature; 4) easier to trigger the camera to record. In the high-temperature environment, the body heat of subjects and environment temperature are hard to tell by the camera, suggesting setting High.</p>
Delay	<p>Select "ON", and press "OK", to set a time interval between photos or videos upon motion. This option can prevent the camera from taking too many photos or videos.</p> <p>Example: Camera will wait 1 minute between photo/video recordings with motion if the pre-set time interval is 00:01:00</p> <p>Configurable delay time: 00:00:05~23:59:59.</p>

## 4. OPERATION LIST

Time Lapse	<p>Select "ON", and press "OK", to set the interval; the camera will shoot pics or video clips automatically upon the interval the user sets. Object motion can still trigger the camera to take photos/ videos if the PIR Switch is ON. Configurable interval: 00:00:05~23:59:59.</p>
Timer1	<p>Select "ON", and press "OK", to set the beginning time and end time (hour/minute); the camera will only work during the period the user set. i.e.: 15:00 – 18:00; camera only works during 15:00 – 18:00</p>
Timer2	<p>Select "ON", and press "OK", to set the beginning time and end time (hour/minute); the camera will only work during the period the user set. i.e.: 15:00 – 18:00; camera only works during 15:00 – 18:00</p>
Remote Control	<p>Real Time/ Delay0.5/1/2/3/4/6/12/24H</p>

## 4. OPERATION LIST

Other	
Language	English, Dutch, Spanish, French
Stamp	Imprints of programmed camera ID, moon phase, temperature, date, and time on photo
Battery Type	Alkaline/ NI-MH/LI Choosing the correct battery type of batteries in the camera makes the camera perform better.
SD Cycle	Select "ON", and press "OK", the camera will continue to record photos/videos by deleting the earliest photos or video clips.
Password	Select "ON", and press "OK", to enable password protection for your camera; support a totally of 6 digits/ alphabets long password access.
Reset	Select "Yes" to reset the camera back to the factory default settings.
FW Update	With updated firmware in the SD card, you can enter this menu to update camera firmware by confirming "Yes" in the options.
About	Firmware version in camera (Version: / IMEI: / MCU:/MOD:)

## 5. SPECIFICATION

Frequency band	B1/B3/B7/B8/B20/B28
Max radio frequency	B1/B3/B7/B8/B20/B28
Image Sensor	4 Mega Pixels Color CMOS
Effective Pixels	2688x1520(16:9)
Day/Night Mode	Yes
IR range	20m
IR Setting	60pcs LED, 940nm-IR LED
Memory	SD Card (8GB – 32GB)
Operating keys	7
Lens	DFOV=100° ; F=2.4// Auto IR-Cut-Remove (at night)
PIR Angle	80°
LCD Screen	2.4" TFT, RGB
PIR distance	20m (65feet)

Specifications are subject to change without prior notice.

## 6. TROUBLE SHOOTING

### 6.1 PHOTOS DO NOT CAPTURE THE SUBJECT OF INTEREST

1. Check the “Sensor Level” (PIR sensitivity) parameter setting. For warm environmental conditions, set the Sensor Level to “High” and for cold weather use, set the sensor to “Low”.
2. Try to set your camera up in an area where no heat resources are in the camera’s field of view.
3. In some cases, setting the camera near water will make the camera take images with no subject in them. Try to aim the camera over the ground.
4. Try to set the camera on stable and immovable objects, i.e.: large trees.
5. At night, the motion detector may detect beyond the range of the IR illumination. Reduce distance setting by adjusting sensor sensitivity.
6. A rising sun or sunset can trigger a sensor. The camera must be reoriented.
7. If a person/animal moves quickly, it may move out of the camera’s field of view before the photo is taken. Move the camera further back or redirect the camera.

### 6.2 CAMERA STOPS TAKING IMAGES OR WON’T TAKE IMAGES

1. Please make sure that the SD card is not full. If the card is full, the camera will stop taking images. Or the user can turn on Cycle Recording to avoid such a problem.
2. Check batteries to make sure that alkaline or NiMH AA batteries’ left power is enough for the camera to work.
3. Make sure that the camera power switch is in the “On” position and not in the “Off” or “Test” modes.
4. When the 4G function is on, there will be around a 1-minute interval for the camera to send out a photo before the camera shoots the next photo. Pull out the SIM card, camera can shoot photos continuously.
5. Please format the SD card with the camera before using it or when the camera stops taking images.



## 6. TROUBLE SHOOTING

### 6.3 NIGHT VISION FLASH RANGE DOESN'T MEET EXPECTATIONS

1. Please check to make sure that batteries are fully charged or left power is enough;
2. "Max Range" offers a better IR flash range. Given IR flash range values are based on the Max Range setting; so please adjust Night Mode to Max Range for better night vision flash range;
3. High-quality 1.2V NiMH rechargeable AA batteries can also offer much better IR flash range; alkaline batteries cannot deliver enough amperage to power the illuminator consistently at night;
4. To ensure the accuracy and quality of the time-image, please mount the camera in a dark environment without any obvious light sources;
5. Certain surroundings (like trees, walls, ground, etc.) within flash range can get you better nighttime images; please do not aim the camera at to total open field where there is nothing within IR flash range to reflect flashback; it's like shining a flashlight into the sky in the night, you just can't see anything; same does camera;

### 6.4 PHOTOS DO NOT CAPTURE THE SUBJECT OF INTEREST

1. Check the "Sensor Level" (PIR sensitivity) parameter setting. For warm environmental conditions, set the Sensor Level to "High" and for cold weather use, set the sensor to "Low".
2. Try to set your camera up in an area where there is not a heat source in the camera's line of sight.
3. In some cases, setting the camera near water will make the camera take images with no subject in them. Try aiming the camera over the ground.
4. Try to avoid setting the camera up on small trees that are prone to being moved by strong winds.
5. Remove any limbs which are right in front of the camera lens.

## 7. WARRANTY

With great pride and full confidence in our products, we always keep our word which are given to our customers as specified warranty terms and services below. Based on a strict QC system, we initially offer all our customers a year-long time-limited warranty, which comes along with a selectable chargeable renewal policy of warranty as one, two, three, or four years.

Our products are warranted against defects in materials and workmanship for a period of one year from the date of original purchase. If a defect exists, we will, at our option and to the extent permitted by law (1) repair the product at no charge using new or refurbished parts; (2) exchange the product with a functionally equivalent product that is new or refurbished.

Provided the product is returned freight charge is paid.

This warranty excludes damage resulting from abuse, accident, modifications, or other causes that are not defects in materials and workmanship, or by someone other than our authorized technicians. This warranty only covers failures due to defects in materials or workmanship under normal usage.

To obtain warranty service, please contact us to determine the nature of the problem before returning the product under this warranty (with a written description of the problem and print samples) for repair or exchange.

## 8. ATTENTION

### 8.1 MOUNTING INSTRUCTIONS

The camera can be attached to a tree using the installation strap through the intended slots on the back to prevent the camera from falling.

1. Choose a tree that will not move in the wind, as movement will cause false detection.
2. Make sure the area immediately in front of your camera is free of branches or twigs that could be blown away by the wind.
3. To produce brighter photos and videos at night, there should be items reflecting the camera's flash in the background.

### 8.2 THE CAUTION OF THE BATTERY

1. Always purchase the correct size and grade of battery most suitable for intended use.
2. Do not mix old & new batteries, alkaline, standard (Carbon-zinc) or rechargeable (Nickel-cadmium) batteries.
3. Clean the battery contacts and also those of the device before battery installation.
4. Ensure the batteries are installed correctly about polarity (+ and -).
5. Always remove batteries if consumed or if the product is to be left unused for a long time

**FC CE RoHS**

