

# CAMOUFLAGE



Camouflage  
EZ Nesteye  
Instruction Manual



## LINK TO ALL LANGUAGE MANUALS



Scan the QR code to download manuals in all languages available



Zeskanuj kod QR, aby pobrać instrukcje we wszystkich dostępnych językach.



Scan de QR-code om handleidingen in alle beschikbare talen te downloaden.



Scan QR-koden for at downloade manualer på alle tilgængelige sprog.



Scannez le code QR pour télécharger les manuels dans toutes les langues disponibles.



Naskenujte QR kód a stáhněte si manuály ve všech dostupných jazycích.



Scannen Sie den QR-Code, um Handbücher in allen verfügbaren Sprachen herunterzuladen.



Skanna QR-koden för att ladda ner manualer på alla tillgängliga språk.



Escanea el código QR para descargar los manuales en todos los idiomas disponibles



Scansiona il codice QR per scaricare i manuali in tutte le lingue disponibili

# TABLE OF CONTENTS

## PREFACE

1. TIPS
2. WHAT'S IN THE BOX?
3. SPECIFICATIONS
4. INTRODUCTION
5. CAMERA OVERVIEW
6. HOW TO CONNECT TO THE APP
7. APP INTERFACE INTRODUCTION
8. CAMERA INSTALLATION
9. HOW TO INSTALL THE NESTEYE
10. GUARANTEE
11. FAQ

## CAMOUFLAGE WEBSITE

Scan the QR code to go directly to our website, where you'll find a wide range of videos, guides, and product tutorials. Quickly and easily access all the information you need to make the most of your product!



## PREFACE

Thank you for purchasing the EZ-NestEye Camouflage Digital Camera. To use our product easily and have a general understanding, we have created this manual, especially for you. This manual explains how to use this camera systematically. Read this manual carefully before use so that you can master the method quickly and correctly.

The contents of this manual are for reference purposes only and use the most current information available at the time the manual was prepared. On-screen displays, illustrations, etc. used in this manual are intended to provide a more detailed and intuitive explanation of camera operations. Due to differences in technological development and production batches, these may differ slightly from the camera you use.

# 1. TIPS

## 1. TIPS

- Keep the bird feeder and all accessories out of the reach of children and pets.
- Make sure the camera is fully charged for the first time.
- Do not expose the camera lens directly to sunlight.
- Do not soak the bird feeder in water.
- Use 2.4 GHz WI-FI to connect the application.
- Keep away from bright light during pairing.
- Keep the bird feeder within range of the WiFi signal.

## 2. WHAT'S IN THE BOX?



Birdhouse



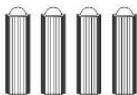
Wooden  
mounting plate



Screwdriver



Drill sticker



Green screws  
spacers



Screws for  
bracket



Pin



Waterproof  
rubber



Charging cable



Screws for  
wooden mounting  
plate

### 3. SPECIFICATIONS

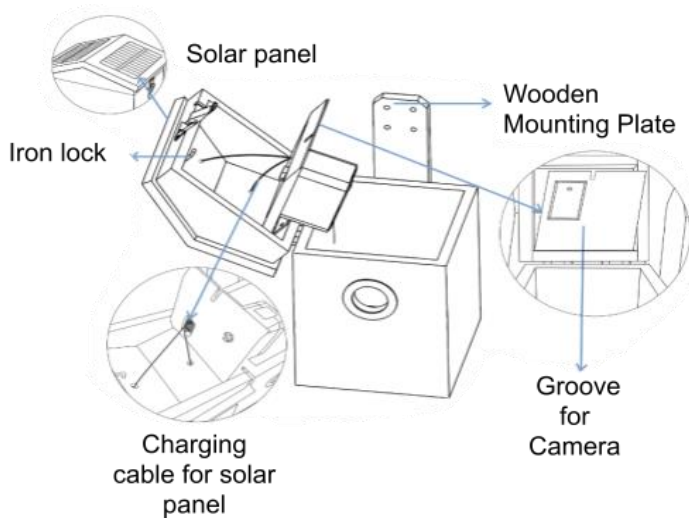
<b>Product Model</b>	EZ-NestEye
<b>To upload</b>	Solar panel and USB cable
<b>Accu</b>	5200 mAh rechargeable lithium-ion battery
<b>Resolution</b>	2,0-megapixel photos and 1080P HD live stream video
<b>Operating temperature</b>	-5°F to 120°F (-20.5°C to 48.5°C)
<b>Wireless type</b>	Wi-Fi 2,4GHz
<b>Field of view</b>	Diagonal: 130°, Horizontal: 94°, Vertical: 40°
<b>Dimension</b>	L7.9*W7.7*H12.7 inch (20*19.5*32.3cm)
<b>Power supply</b>	DC 5V2A
<b>Energy consumption</b>	2W/h (max.)
<b>Battery life</b>	4-6 years
<b>Night vision</b>	Yes
<b>Anti-flicker</b>	50HZ/60HZ



### 3. SOLAR PANEL SPECIFICATION

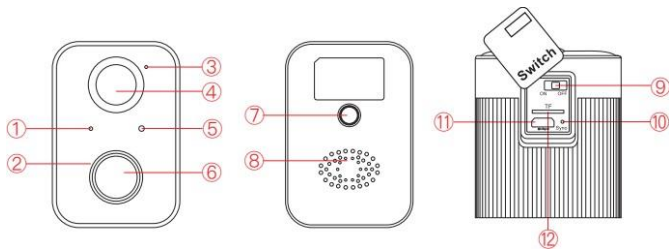
<b>IPCE</b>	19
<b>Working Voltage (Vmp)</b>	5V ± 5%
<b>Workflow (Imp)</b>	400mA±5%
<b>Open circuit voltage (VOC)</b>	7.2V ± 5%
<b>Short circuit current (ISC)</b>	480mA±5%

## 4. INTRODUCTION TO BIRD FEEDER



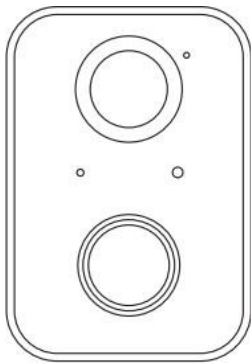
**PLEASE NOTE:** Be careful with this charging cable so that it does not break.

## 5. CAMERA OVERVIEW



1. Indicator light
2. Infrared LED
3. Microphone
4. Motion sensor
5. Light sensor
6. Lens
7. Mounting hole
8. Speaker
9. Enable/disable
10. Sync/reset
11. Charging port
12. TF card slot (capacity expansion 128GB)

## 5. CAMERA OVERVIEW



### Indicator light

- Turn on camera: Red light always ON.
- Pairing mode: The red light flashes quickly.
- Network connection: Green light flashes quickly.
- Network connected: Green light always ON.
- Abnormal status: red light flashes slowly. (Needs to be reset).
- During firmware updates: The yellow light is always ON.
- Charging status: white light always ON when charging and OFF after fully charged.

## 6. HOW TO CONNECT TO THE APP

Download or scan the QR code and install the Bird Lover App for IOS or Android. Once downloaded, the APP will ask you to register your device. Enter your email address and select the country in which you live. You will receive the registration code. Enter the registration code and then create a password.



**SCAN ME!**

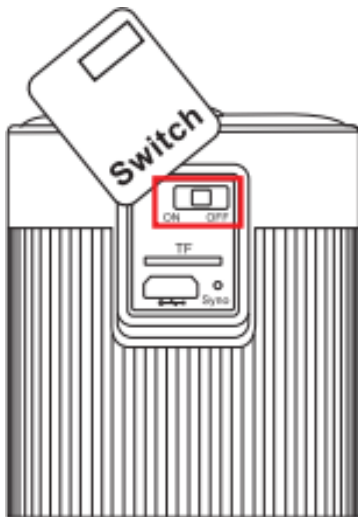
## INSTALLING THE APP



## 6. HOW TO CONNECT TO THE APP

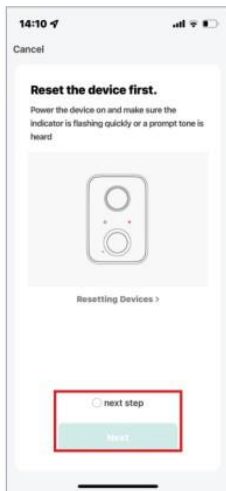
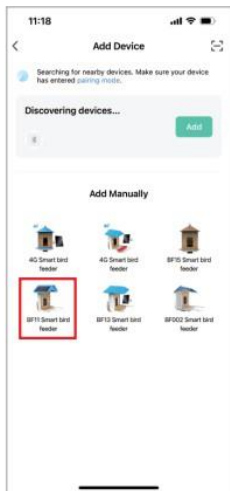
(ONLY WORKS ON 2.4GHz WIFI - not on 5Ghz)

1. Turn on the power switch.



## 6. HOW TO CONNECT TO THE APP

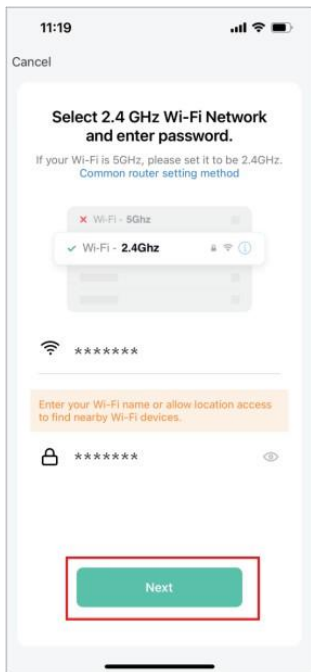
2. Open the APP and connect according to the following steps.  
Select the device: BF11



Select the device: BF11

## 6. HOW TO CONNECT TO THE APP

3. Enter the WIFI password.

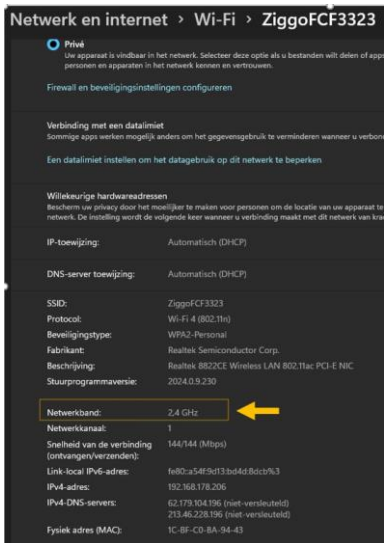




## 6. HOW TO CONNECT TO THE APP

Problems connecting? Make sure to follow the following steps:

1. Find out if you have 2.4Ghz
2. under WiFi settings, search for “network band”

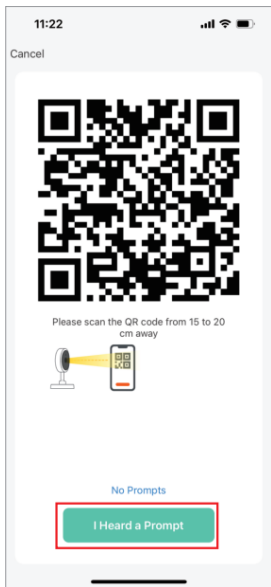


2. Switch to 2.4Ghz if you have a dual band wifi router

link: <https://wildcameraxl.nl/pages/wifi-eng>

## 6. HOW TO CONNECT TO THE APP

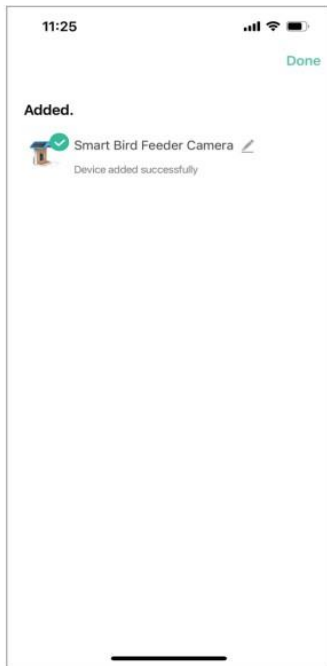
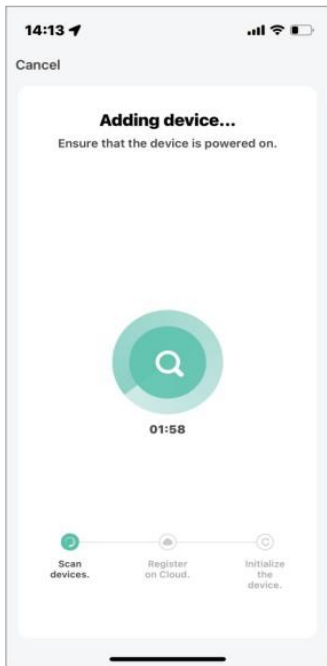
4. Scan the QR code with the camera, and enter the connection after hearing the sound of the camera prompt.



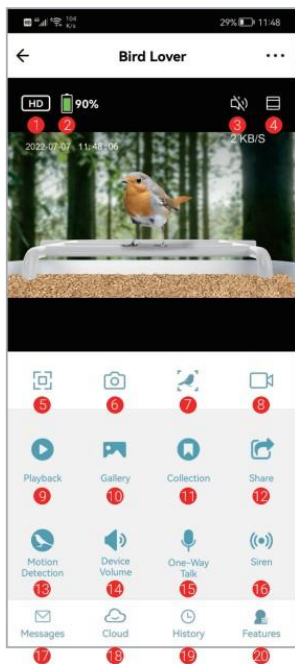
**NOTE:** The QR code must be pointed at the bottom camera

## 6. HOW TO CONNECT TO THE APP

5. Wait for the connection to complete, and click "Done".



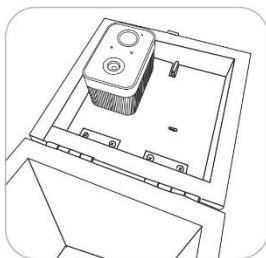
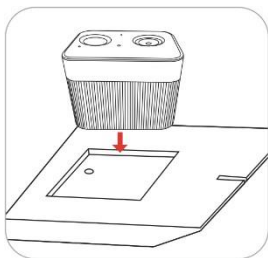
## 7. APP INTERFACE INTRODUCTION



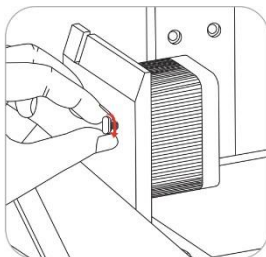
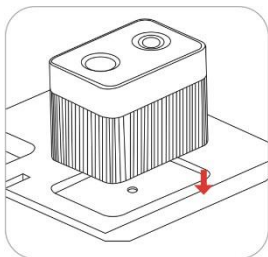
1. Quality Adjustment: You can choose HD or SD
2. Remaining battery capacity
3. Voice switch
4. Zoom in on the camera screen
5. Screen horizontally or vertically
6. Take a photo
7. Bird identification
8. Make videos
9. Play the previous one
10. View photos or videos that have been taken
11. View the bird collection
12. Motion detection (click to turn on/off)
13. Sirens
14. One-way conversation
15. Motion detection notification
16. Cloud storage service
17. Bird Identification History
18. Back to all function interface

## 8. CAMERA INSTALLATION

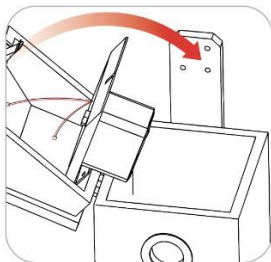
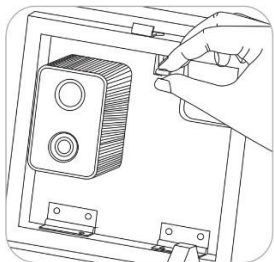
1. The wooden inner plate has a groove for the camera, which can firmly fix it and make it stable.



2. Make sure the screw hole of the camera matches the screw and then tighten it. Turn the iron lock, attach the wooden plank, and lock it under the wooden roof.



## 8. CAMERA INSTALLATION

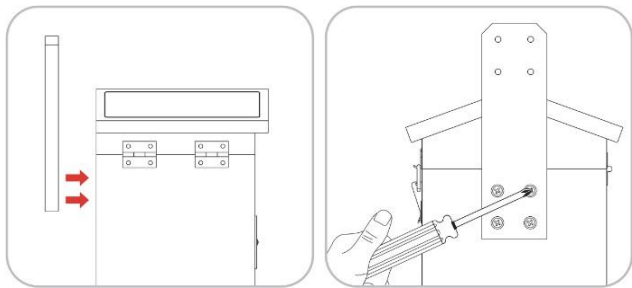


3. This image shows you the internal structure.

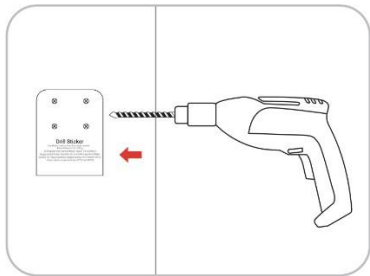


## 9. HOW TO INSTALL THE BIRD FEEDER

1. Use the screwdriver to remove the board.

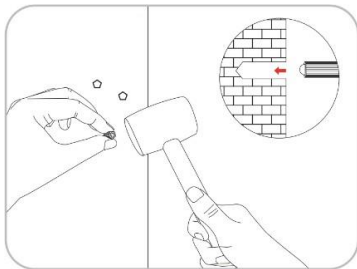


2. Stick the sticker on the wood or wall and drill screw holes into within the range indicated on the sticker.

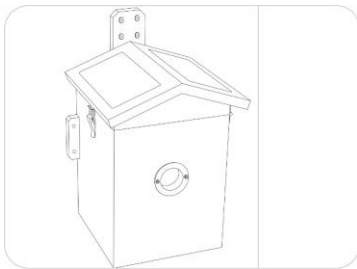


## 9. HOW TO INSTALL THE NESTEYE

3. Insert the green plastic plugs into the holes.



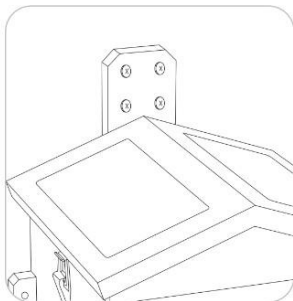
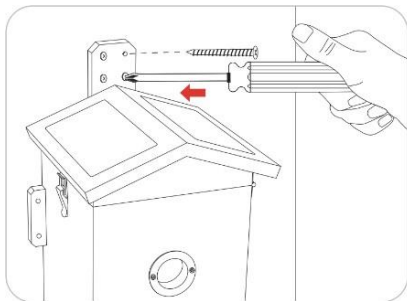
4. Attach the bracket with long screws.





## 9. HOW TO INSTALL THE NESTEYE

5. The bird nest can be fixed firmly.



## 10. GUARANTEE

We are very proud of our products. We always keep our promises. We offer an advanced warranty period and service. When you purchase our product, you are covered by a limited warranty.

We warrant our products to be free from defects in material and workmanship for a limited warranty from the date of original purchase. This warranty does not cover consumer damages such as misuse, abuse, improper handling or installation, or attempted repair by anyone other than our authorized technicians. During the warranty period, we will, at our option, repair or replace your camera with an identical or comparable model without modification. This warranty extends only to the original purchaser from our authorized dealer. Purchase required to receive warranty benefits. The warranty on any replacement product provided under the original warranty will continue for the remainder of the warranty period applicable to the original product. This warranty applies only to defects resulting from defects in material or workmanship under normal conditions of use and does not cover normal wear and tear of the product.

If you need to return a product under this warranty, please contact your supplier.

## 11. FAQ

**Q: Do I need to create an account to use the App?**

A: Yes, you need to use your email address or phone number to get a verification code to register an account.

**Q: What operating systems are the App compatible with?**

A: The App is compatible with Apple iOS and Android systems. IOS 10.0 and above. Android V5.0 and above.

**Q: What Wifi band does the AI Camera support?**

A: 2.4 GHz WiFi only.

**Q: How many accounts can be linked to one EZ-NestEye?**

The EZ-NestEye can only be linked to one account at a time. If other accounts link it, long press the reset button for 10 seconds to release.

**Q: Can I share the Smart Bird Nest with other users?**

Yes. You can share the EZ-NestEye with other users, but they must install the “Bird Lover” app. When the app is ready, one of the following methods is optional to share the device:

**If they have an individual account:**

Share the device by adding their account names.  
Add new accounts to your family group.

**If they don't have an individual account:**

Use your main account and password to log in like you do.

**Q: What is the language of the app?**

The app's language corresponds to the system language of your device. However, the language of the AI recognition result now only supports English or Chinese.

## 11. FAQ

### **Q: Why does the camera battery run out so quickly?**

It is a camera with low energy consumption. In addition, the solar panel can maintain daily energy consumption on sunny days. If the battery drains too quickly, check the following:


- Do you check the camera too often with the app?
- Whether the camera always activated when too many birds visit?
- Is the Wi-Fi performance good or not? Once the camera loses WiFi or the WiFi is too weak, the camera searches for the WiFi signal again and again until the power runs out.

### **Why is "Play" not available?**

Check the following:

- Confirm that the TF card is installed correctly or the payment action of cloud storage is completed. If the TF card cannot be read, please format it to FAT32 by computer. Our product supports 4G-128G TF cards.
- Make sure you have enabled recording in the "Recording Settings" and enable detection mode.

### **Q: How can I enable or disable the message notification?**

- Go to the main page and find "Me" at the bottom left, click the icon  "Set the app notification to enable or disable 'Turn on notifications'. You can also set a schedule for "Do Not Disturb" on the same interface.
- Enable or disable the "Motion Detection" via the UI interface.
- Enable or disable the "Detection Alarm Settings" on the settings interface.

### **Q: What should I do if the device does not work properly?**

- Check that the power cable is connected correctly and make sure the power switch is turned on.
- Check whether WiFi is available and whether the smart bird nest works within the WiFi range.
- Remove and reconnect the device.

**FC CE RoHS**



**DECLARATION  
OF CONFORMITY**