

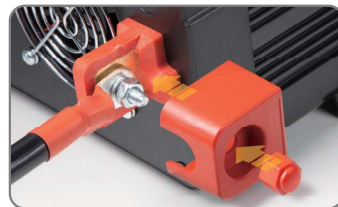
Inverter 3000W Sine TE23



Type Approved
Safety
Regular Production
Surveillance

www.tuv.com
ID 1111265835

- Power Inverter DC 12V to AC 230V
- 2xUSB: 1xUSB-A, 1xUSB-C Max 3A each
- Automatical Turn Off with Alarm
- Built-in Ventilation Fan
- Real sine wave
- LC-Display with Voltage-meter for In- and Output
- Overcurrent Protection
- 3000W continuously Output Power
- 2x230V Sockets
- High & Low Voltage Protection



- For mobile use of electronic devices via 12V connection
- 2x USB ports with max. 6A Charger(1x USB-A QC3.0 and 1x Type C)
- 2x 230V safety contact sockets with power switch
- Converts 12V DC battery power into standard 230V AC (household) power, to run a variety of electronics, e.g. tablets, smartphones, laptop computers,
- game systems, TVs, DVD/MP3 players, camping accessories, GPS units and much more
- Automatic safety shutdown to secure the car battery (alarm at ~10.2V & ~15,8V)
- Protection against overload & short circuit
- Overheating protection through built-in ventilation

Technical Specifications:

- Input voltage of the battery DC 12V (10.2V–15,8V)
- Output voltage per socket AC 230V / AC frequency 50Hz nominal
- Real sine wave
- Circuit protection (DC overload): 10x 40A internal fuses
- Cable length 2x 60cm

Weight / Dimensions:

6kg / 45 x 26 x 13cm

Package Contents:

Power Inverter 3000W TE23, Fixed bracket on device, 2x 60cm connection cables, User Manual



Prod. Number: 5028

