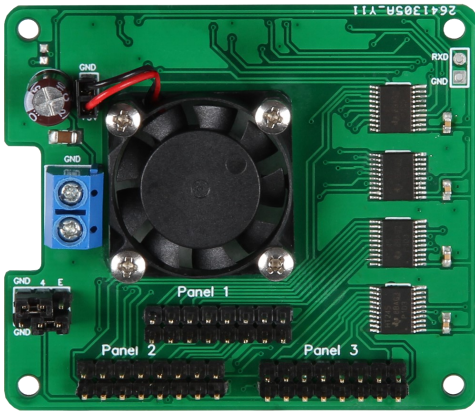


# RB-MATRIXCTRL

Controllerboard for RGB-LED Matrix



With the help of this expansion board for your Raspberry Pi you can control up to 3 RGB-LED-Matrix rows with the common HUB75 connector, e.g. our Joy-It RGB-LED-Matrix (LED-Matrix01). In addition, a 25x25mm fan is installed to ensure sufficient cooling of the Raspberry Pis.

## MAIN FEATURES

Function	Logic level converter from 3.3 V to 5V for controlling of up to 3 LED matrix rows
Passive and active cooling	Aluminium heatsink and 25x25mm fan
Special features	provides Raspberry Pi with current
Compatible with	Raspberry Pi 3A/B/A+/B+, 4B
Dimensions	65 x 56 x 26 mm
Items delivered	Controller, heatsink, fan, 2 spacers, 6 screws and nuts, 4 flat washers , 2 jumpers

## FURTHER SPECIFICATIONS

Input voltage	5 Volt
Interfaces	3x HUB75 plugs
Data line E switchable	with jumpers to Pin 4 or 8

## FURTHER DETAILS

Article No.	RB-MatrixCtrl
EAN:	4250236819631
Customs Tariff No.	8473302000