

ATMO[®]
T U B E



www.atmotube.com
notAnotherOne



ATMO[®] T U B E

PRO

Our most advanced solution for both indoor and outdoor air quality tracking.

It detects PM1, PM2.5, and PM10 pollutants, such as dust, pollen, soot, and mold spores. It can also measure VOCs concentration, atmospheric pressure, temperature, and humidity - all in real time!



VOLATILE ORGANIC
COMPOUNDS



PARTICULATE
MATTER 1µg



PARTICULATE
MATTER 2.5µg



PARTICULATE
MATTER 10µg



HUMIDITY



TEMPERATURE



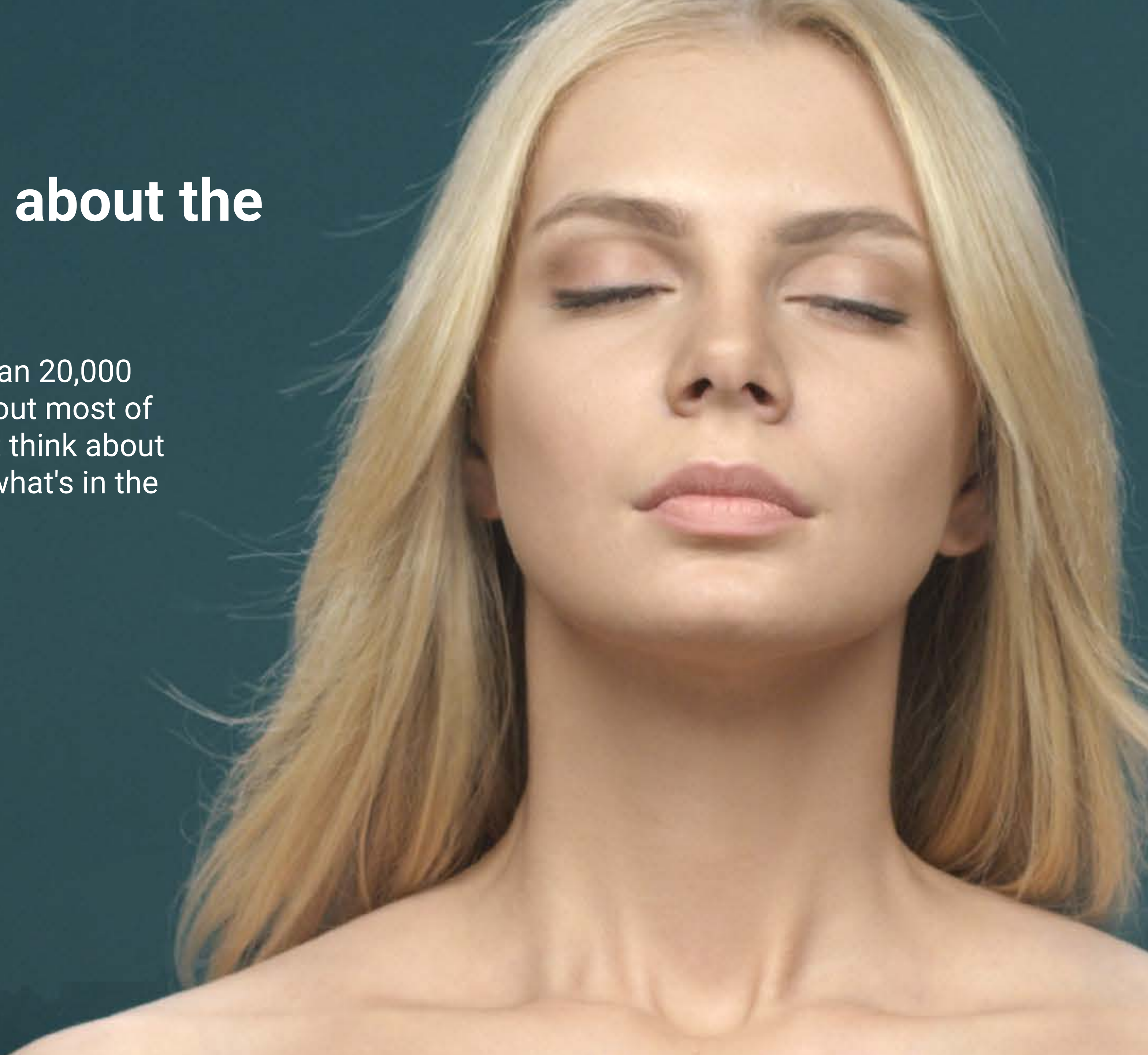
ALTIMETER



ATMOSPHERIC
PRESSURE

Why should we bother about the air quality?

Every day, we unconsciously take more than 20,000 thousand breaths and don't even think about most of them. Unless we have a problem, we don't think about WHAT we're breathing in either, and how what's in the air might affect our bodies.



Why VOCs?

VOC is one of the major reasons of Smog.

VOCs play a significant role in the formation of ozone and fine particulates (PM) in the atmosphere. Under sunlight, VOCs react with nitrogen oxides emitted e.g. from vehicles and industrial activities to form ozone, which in turn helps the formation of fine particulates. The accumulation of ozone, VOCs, fine particulates and other gaseous pollutants results in **Smog**.

VOCs are emitted both outdoors and inside. They can cause eye, nose, and throat irritation as well as headaches, loss of coordination, and nausea. They may also cause damage to the liver, kidney, and central nervous system. Some are suspected or known to cause cancer.

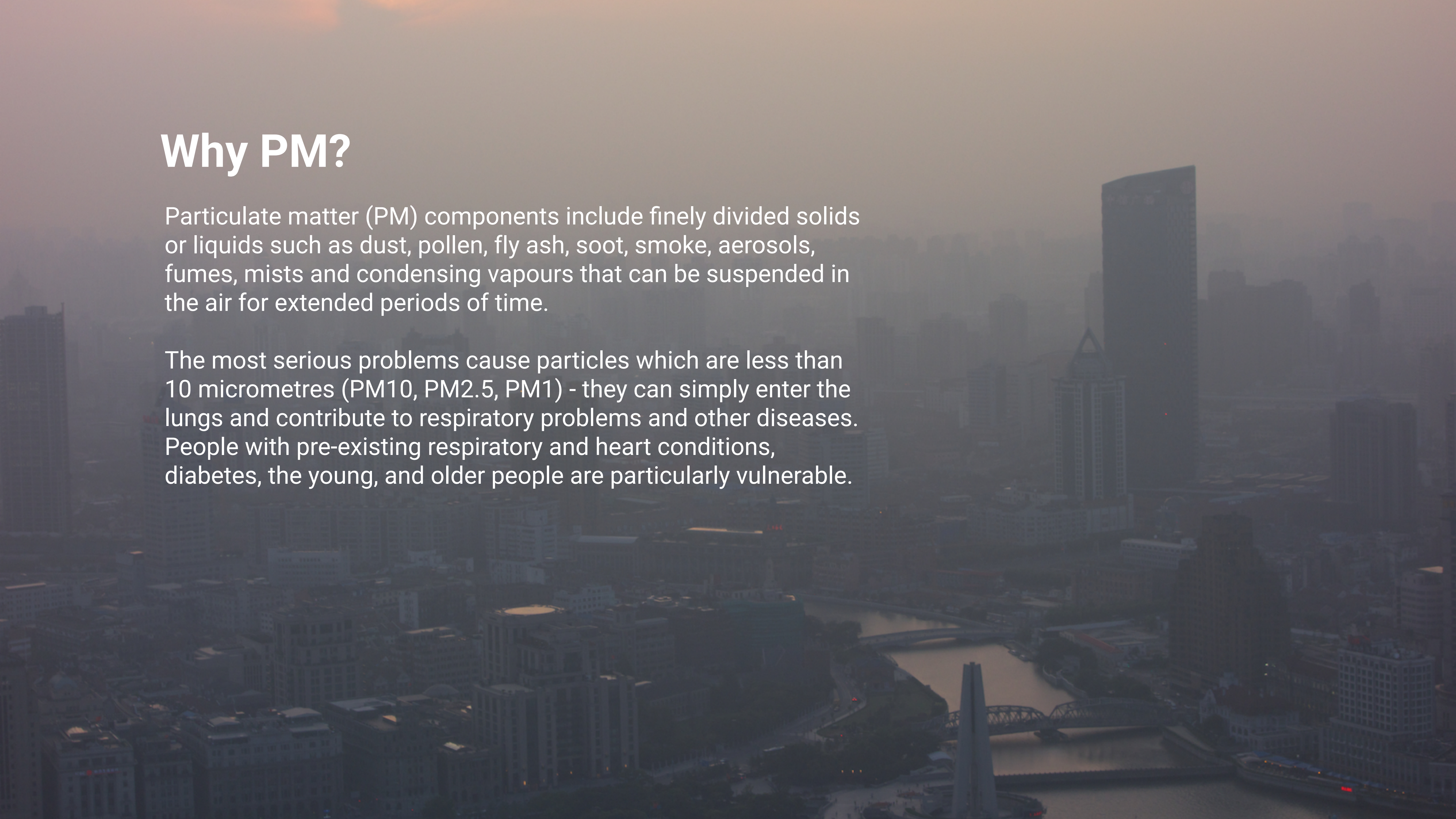
Most people don't find out they've been exposed to toxic air until it's too late.



Why PM?

Particulate matter (PM) components include finely divided solids or liquids such as dust, pollen, fly ash, soot, smoke, aerosols, fumes, mists and condensing vapours that can be suspended in the air for extended periods of time.

The most serious problems cause particles which are less than 10 micrometres (PM10, PM2.5, PM1) - they can simply enter the lungs and contribute to respiratory problems and other diseases. People with pre-existing respiratory and heart conditions, diabetes, the young, and older people are particularly vulnerable.



The background image shows a hazy, industrial landscape. In the foreground, there are dark silhouettes of trees. The middle ground features rolling hills and several tall smokestacks emitting plumes of smoke or steam. In the distance, power lines and towers are visible against a hazy sky. The overall color palette is muted, with greys, browns, and a pale yellowish-green from the sky.

Air pollution is a global problem and awareness about its impacts is just starting to grow.

At the moment WHO's urban air quality database covers 1600 cities across 91 countries – 500 more cities than the previous database (2011), revealing that more cities worldwide are monitoring outdoor air quality, reflecting growing recognition of air pollution's health risks.

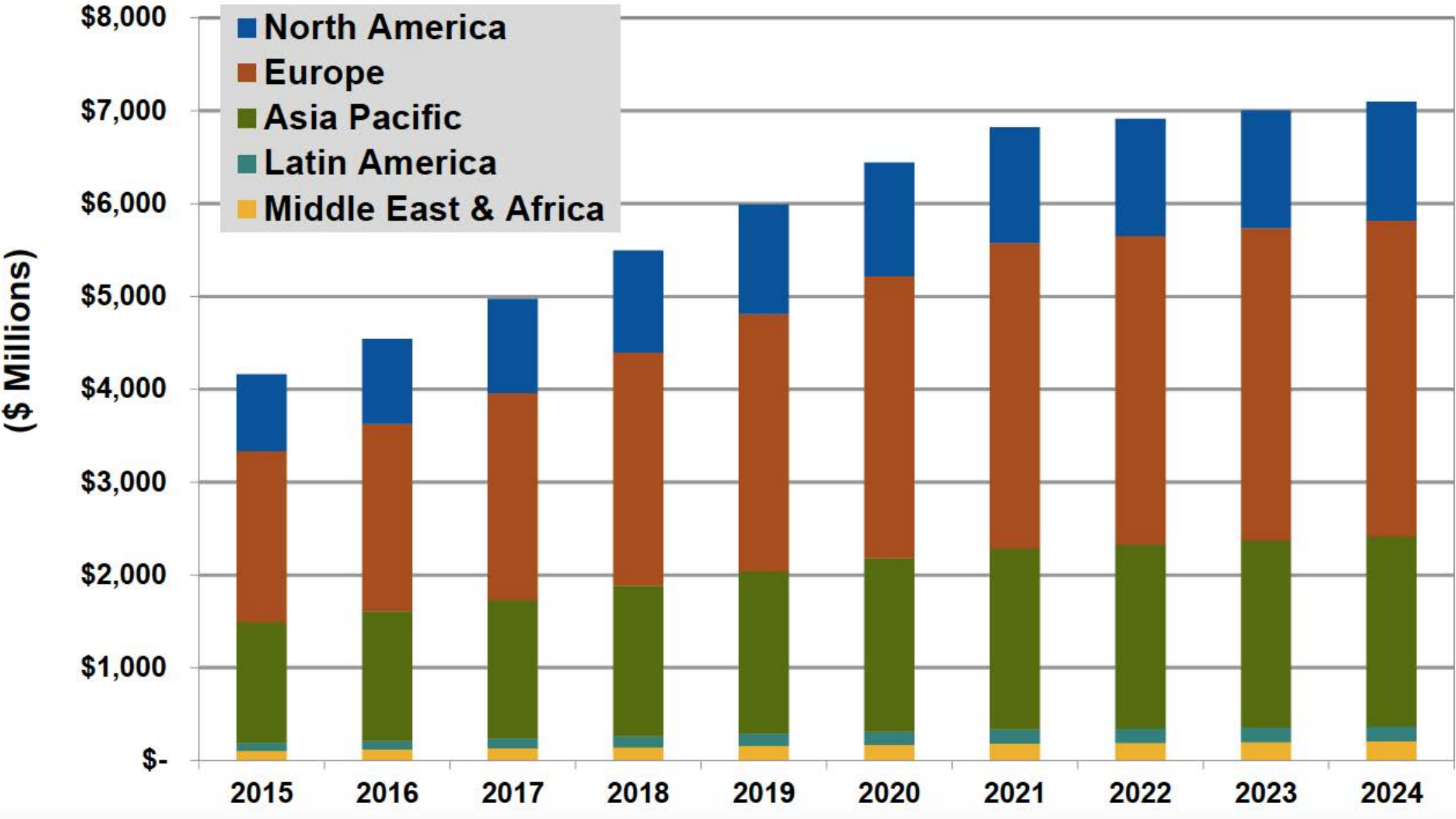
Market Size

According to a new market research report "Air Quality Monitoring Equipment Market by Product (Portable, Fixed Gas, Dust & Particulate Monitors), End User (Commercial & Residential, Power, Pharmaceutical, Academia), Component (Physical, Chemical, Biological) - Global Forecast to 2019, published by MarketsandMarkets,

the global Air Quality Equipment Market is expected to reach \$6,147.77 Million by 2019 from \$3,965.25 Million in 2014, growing at a CAGR of 9.15% between 2014 and 2019.

Source: Navigant Research

Navigant Research confirms this forecast and estimates the following revenues worldwide:



Indoor Environmental and Air Quality Technologies Revenue by Region, World Markets: 2015-2024



How it works

The sensors inside Atmotube keep constant track of air parameters and send the data to your mobile phone via Bluetooth Low Energy (LE).

The Atmotube mobile app is free and available for iOS 9 and Android 4.3+ smartphones with Bluetooth LE support.

If the air quality gets below certain point, you will immediately receive an alert notification.

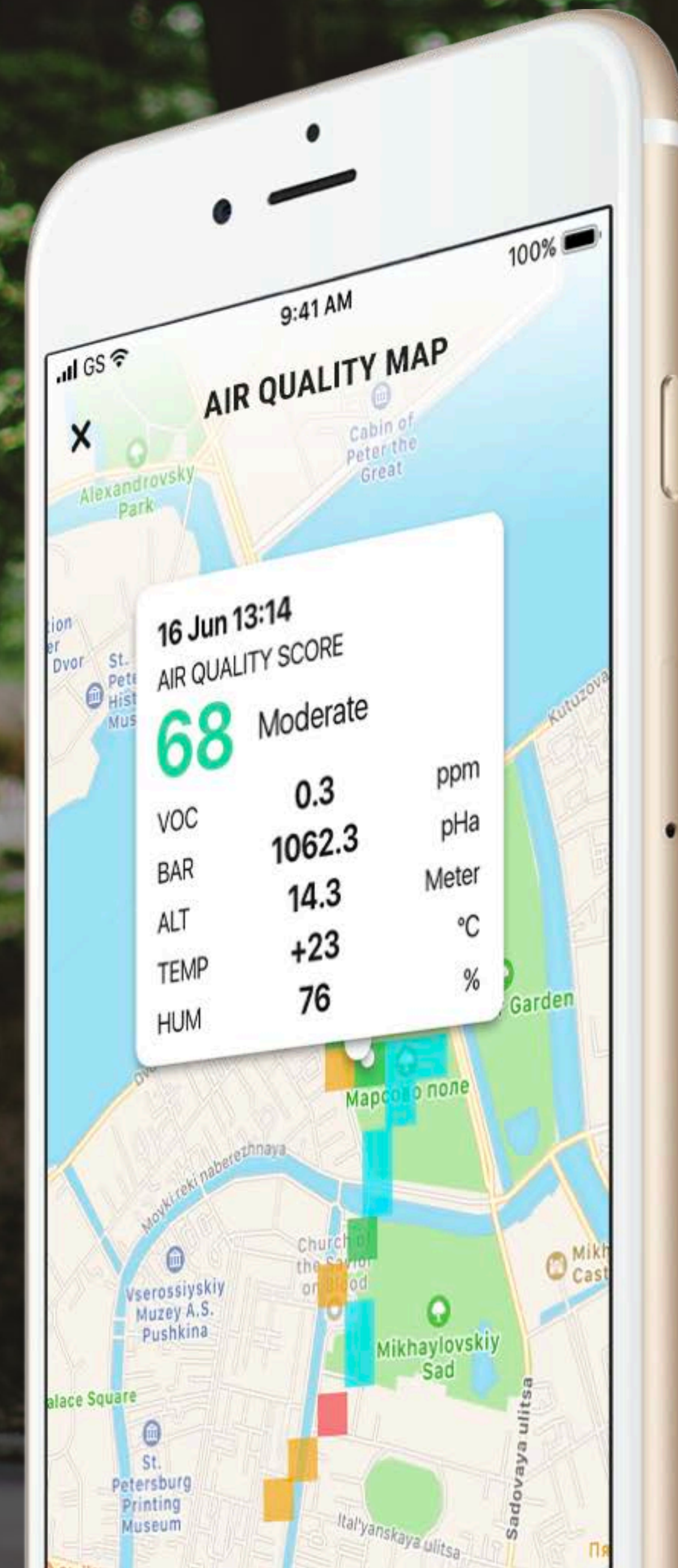
You can access all your measurements, an air quality map, and your personal air score from your mobile phone, which will help you to make the right choices and live healthier.

For PM1, PM2.5, and PM10, readings on Atmotube Pro just press the button one time to start measuring the (PM1, PM2.5, PM10) pollution.

The DATA

The aggregated environmental data is stored in our Cloud and shared to a global air quality map that is free to use.

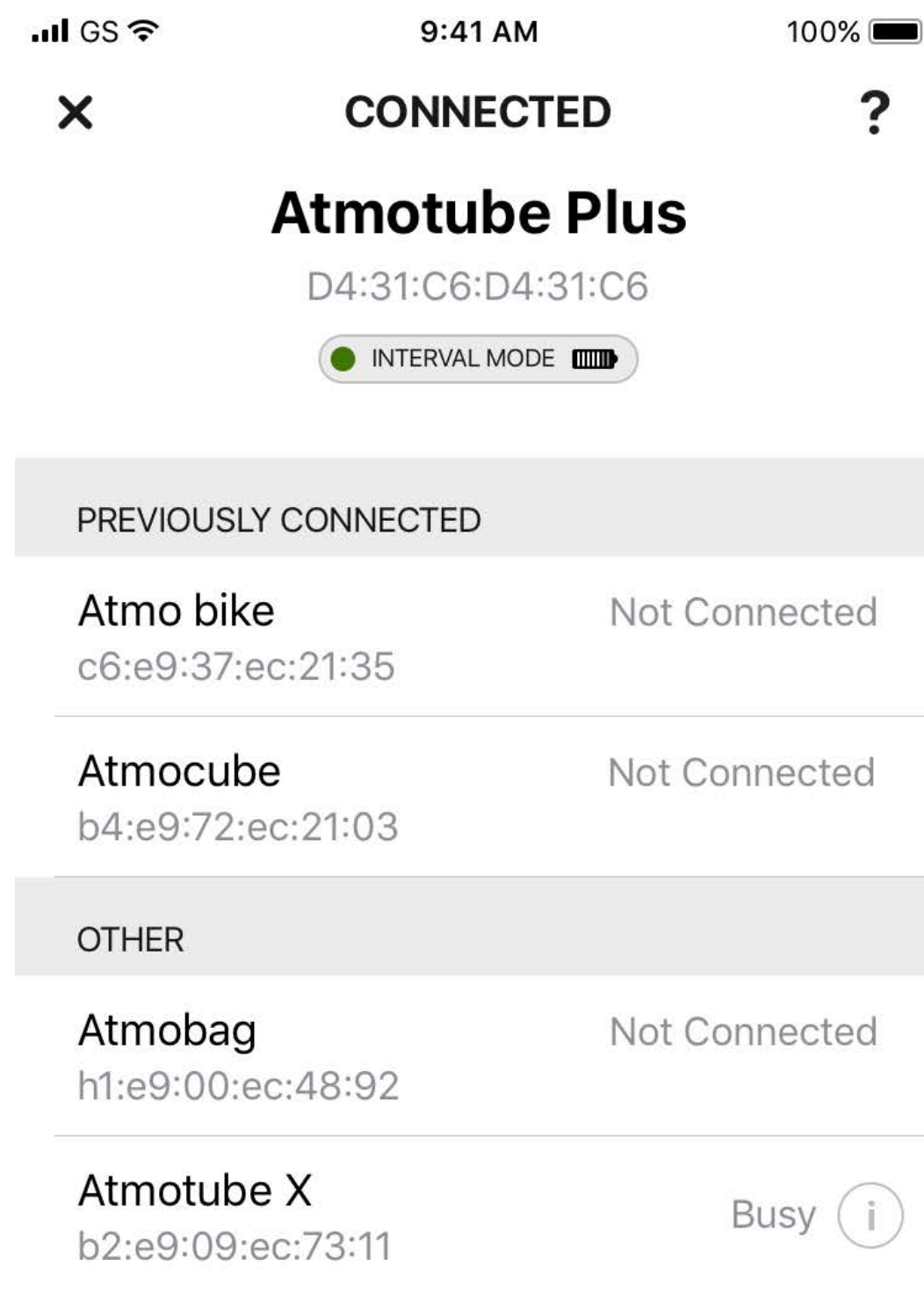
Each Atmotube is a personal contribution to global air pollution awareness, as well as a potential lifesaver for you and your family.



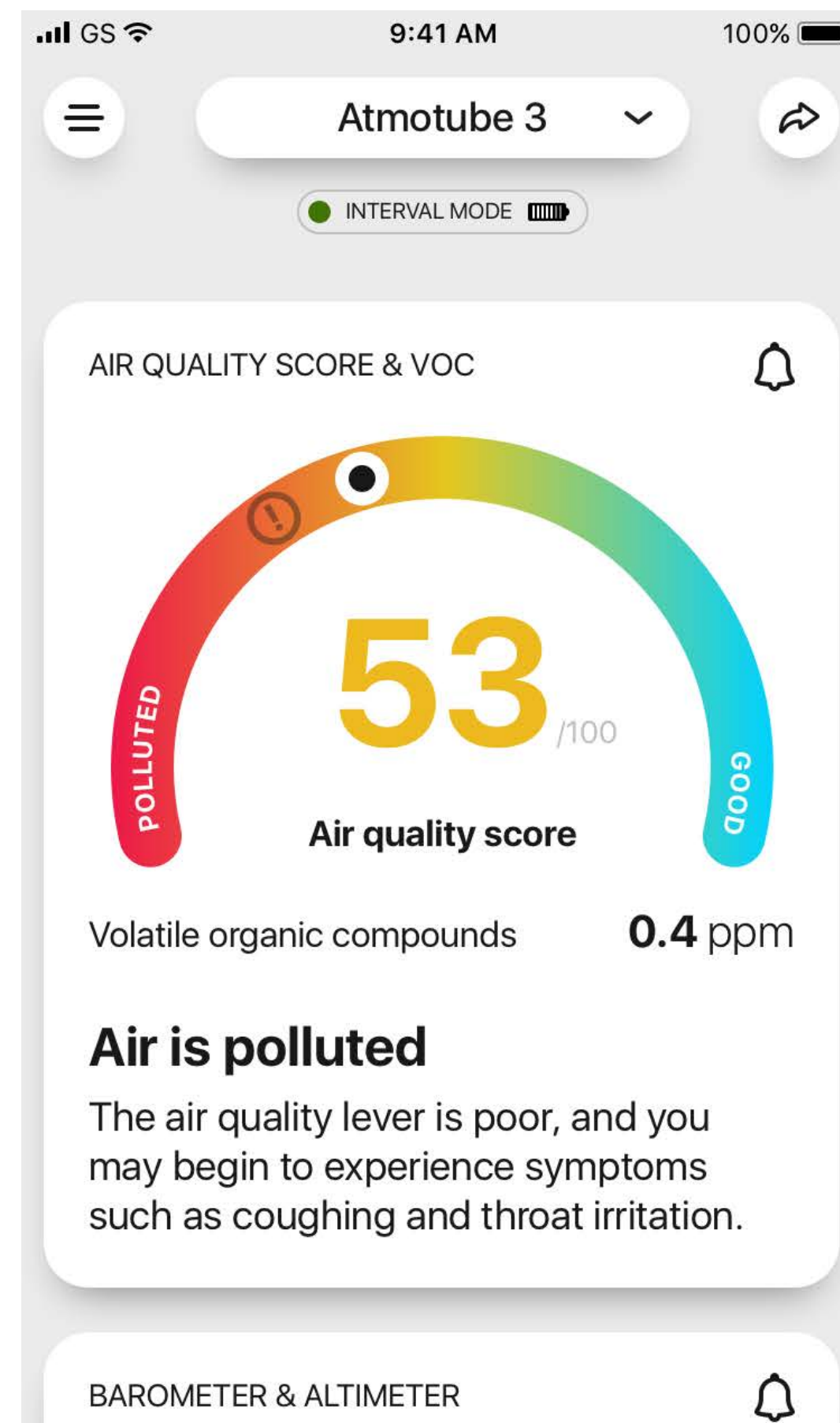
Smartphone application



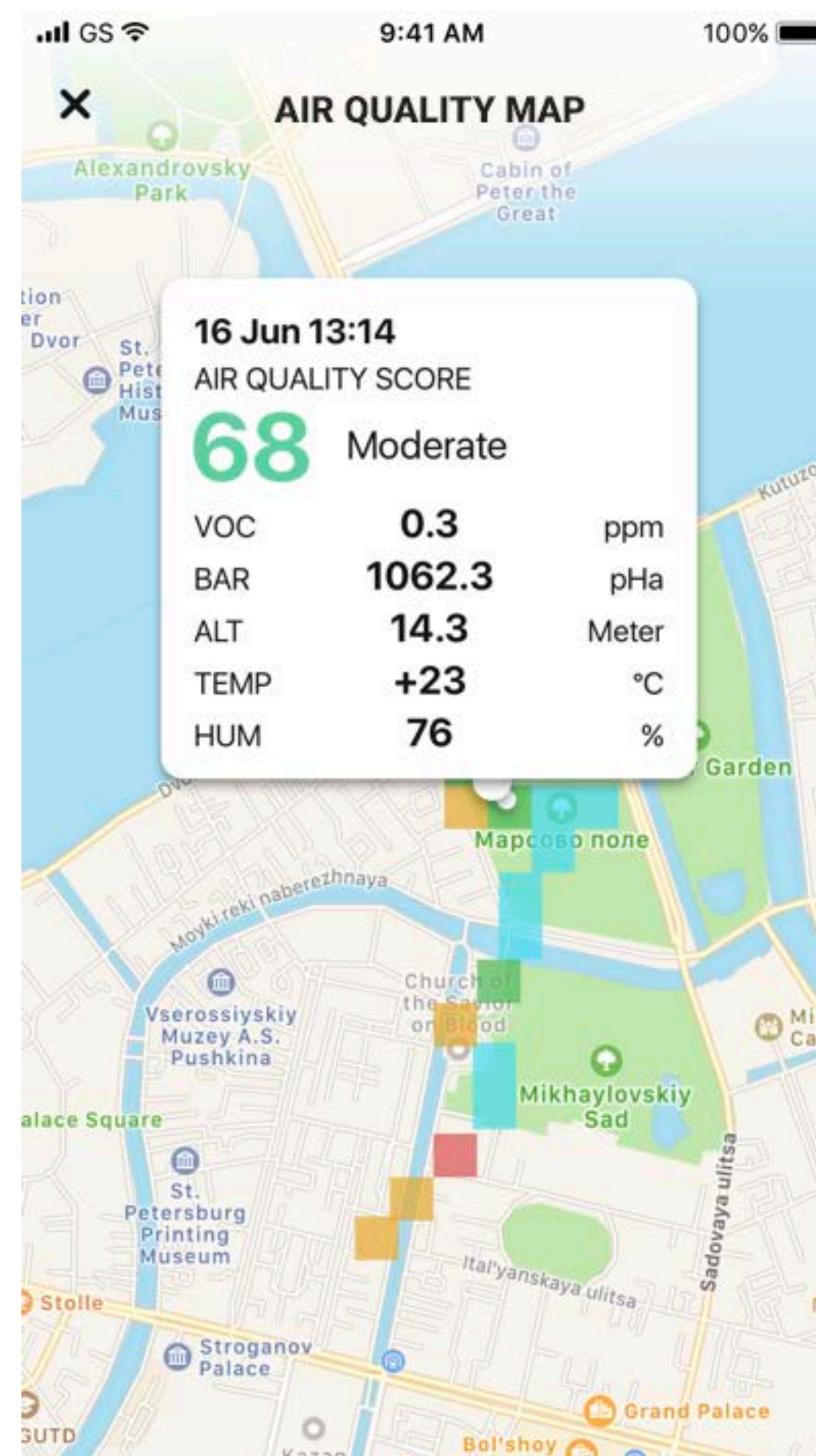
Connect Atmotube to your smartphone



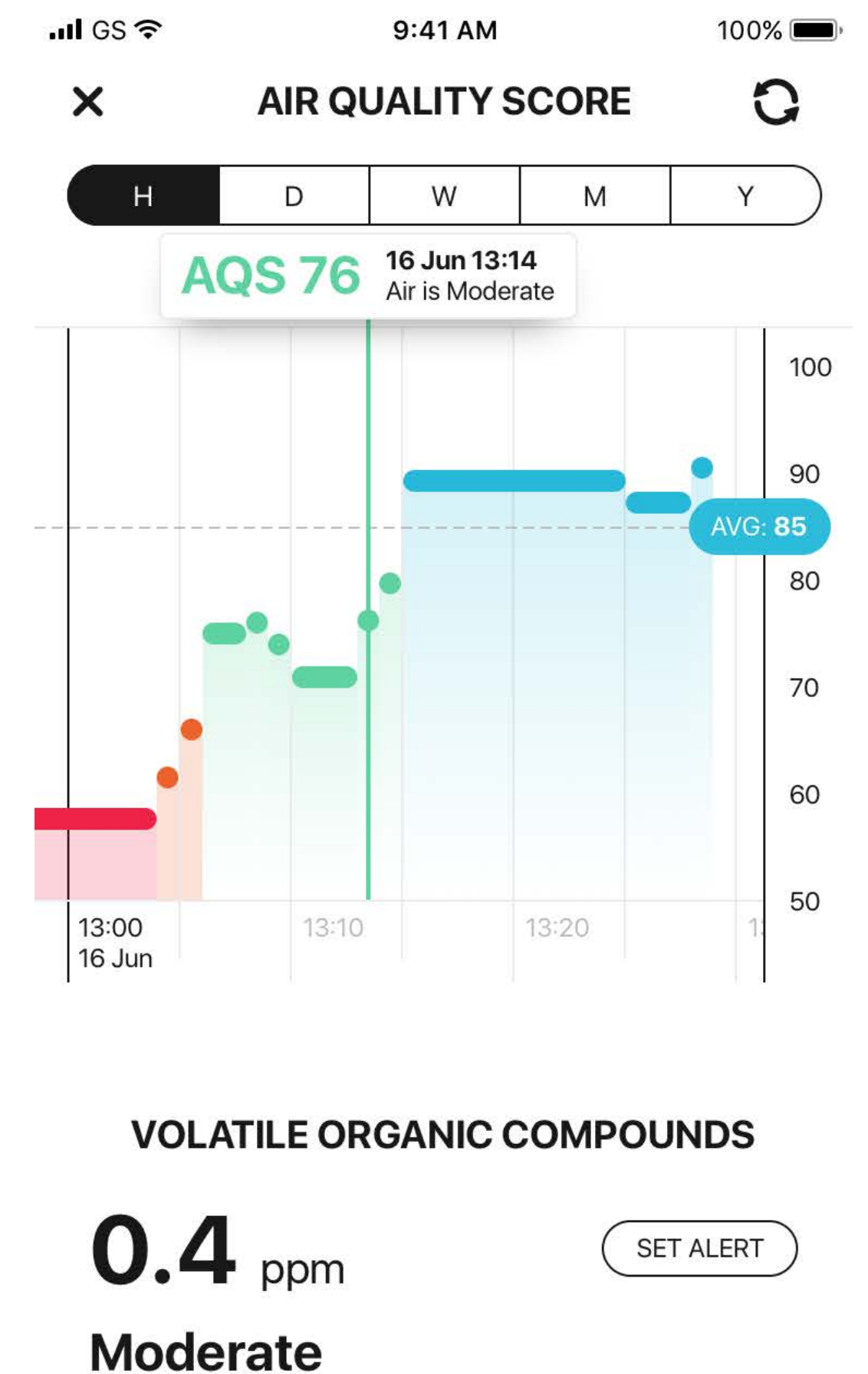
Track the air quality score, VOCs concentration, temperature and humidity in real time



Share air quality data on the map and in the social networks



View history of all measurements on the graphs



Comparison



PLUS



PRO

PM SENSOR		✓
BAROMETER/ALTIMETER	✓	✓
TEMPERATURE	✓	✓
HUMIDITY	✓	✓
HARMFUL GASES & VOCs SENSOR	Upgraded MEMS TVOC + gases sensor with automatic calibration	Upgraded MEMS TVOC + gases sensor with automatic calibration
BLUETOOTH	Bluetooth 5.0, improved antenna performance	Bluetooth 5.0, improved antenna performance
BATTERY LIFE	7 days	7 days if PM sensor is used about 10 times a day for 10-15 minutes

ATMOTUBE PRO

Technical characteristics

- Polycarbonate plastic + Aluminum holder
- RGB LED
- Bluetooth Low Energy (BLE 5.0)
- VOC sensor (Sensirion SGPC3)
- PM1/PM2.5/PM10 sensor
- Temperature, Humidity and Pressure sensor (Bosch BME280)
- USB Type C
- Li-Pol rechargeable battery (2000 mAh)
- Weight 93 grams
- Dimensions 84x45x22 mm
- Min. detected concentration of VOCs - 0.01 ppm





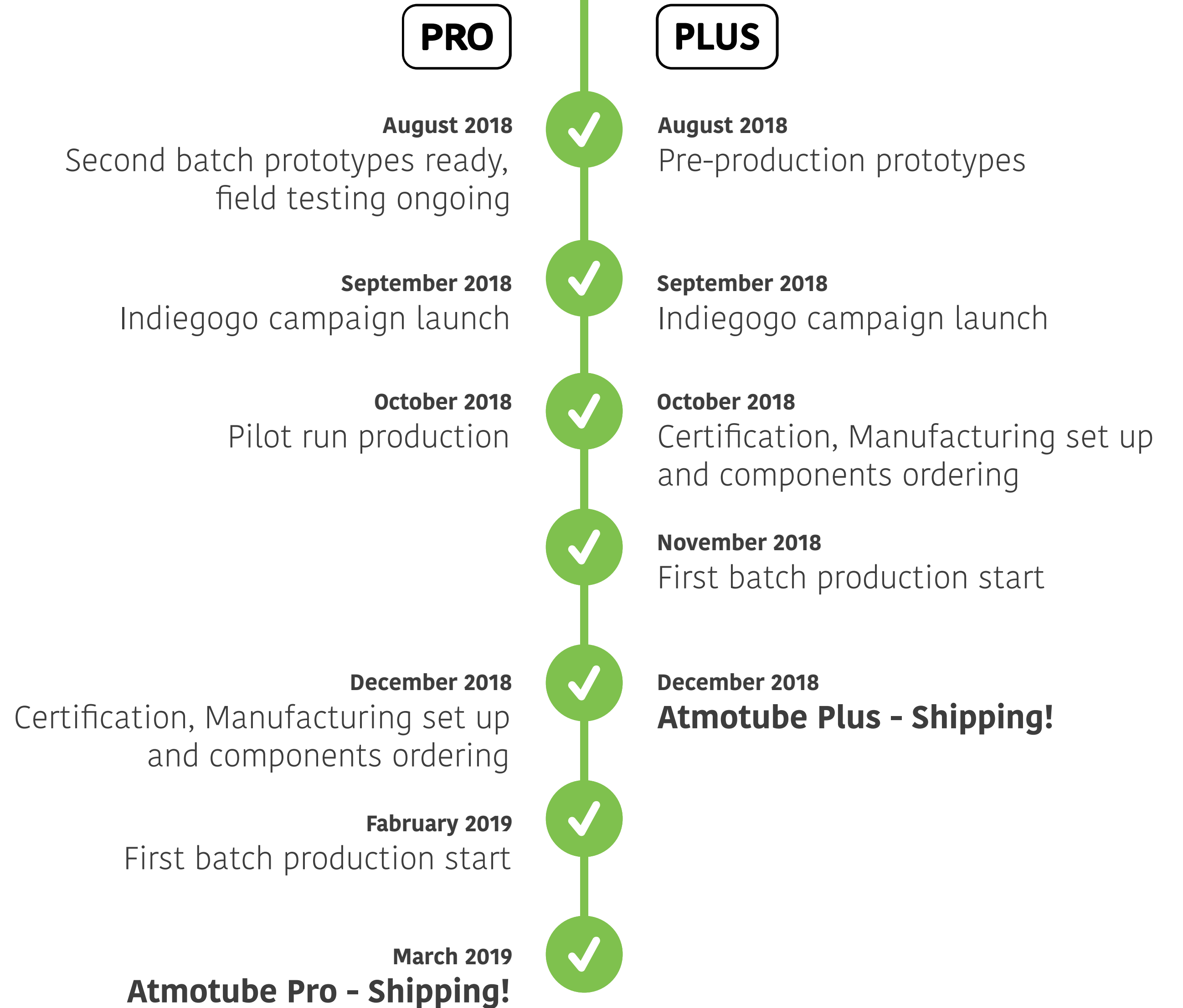
ATMOTUBE PRO

**Packaging set:
box, user guide,
carabine, cable**

Atmotube Timeline

We designed and developed Atmotube 2.0 in 2016.

Today, we have produced and shipped several thousand Atmotubes. They are now available on our website, Amazon, and by retail in many countries. We received tons of valuable feedback and accumulated lots of knowledge about specific air pollutants, sensor technologies, and our users' wants and needs to create an even more useful and indispensable product.



**Take it with you wherever you go, or
use it at home or in the office**



Press about Atmotube



“Personal sensors: the first genuine must-have accessory?”

uncrate

“ATMOTUBE AIR POLLUTION MONITOR”

SLASH GEAR

“Atmotube is an upcoming portable device that tries to make users aware of just how safe or not the air we breathe really is.”

TE TechCrunch

“Atmotube Is A Tiny Pollution Sensor That Clears Up What’s In The Air You Breathe.”

VentureBeat

“Atmotube tells you if the air you’re breathing is toxic.”

gizmag

“Atmotube personal pollution monitor tracks air quality on the go.”

Most compact and affordable Air Quality Tracker

**Makes you smarter
about the air you breathe**



ATMO[®]
T U B E



contact us
info@notanotherone.com

Thank You!