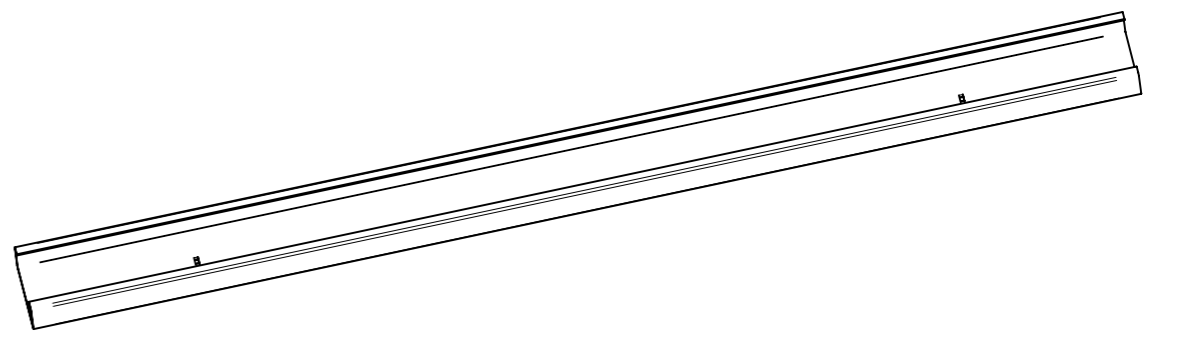
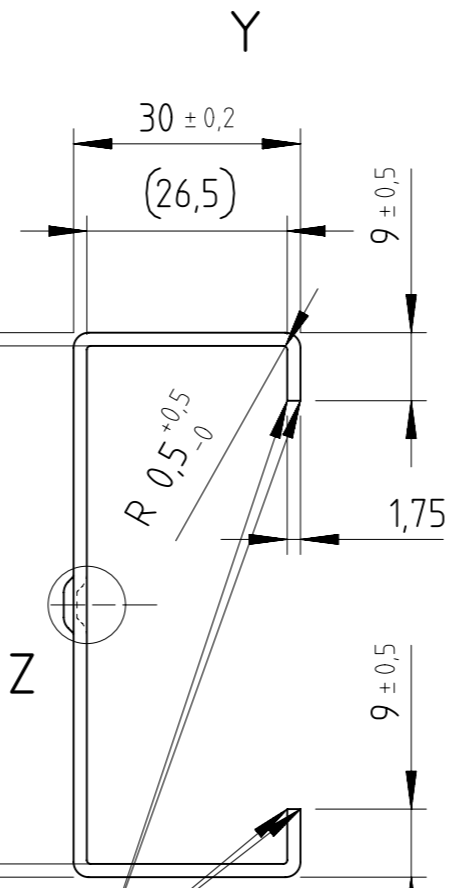
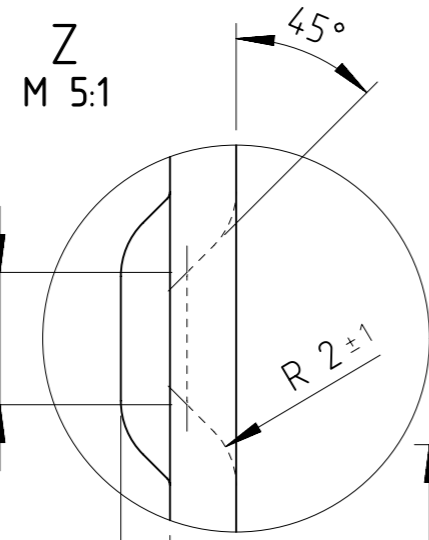
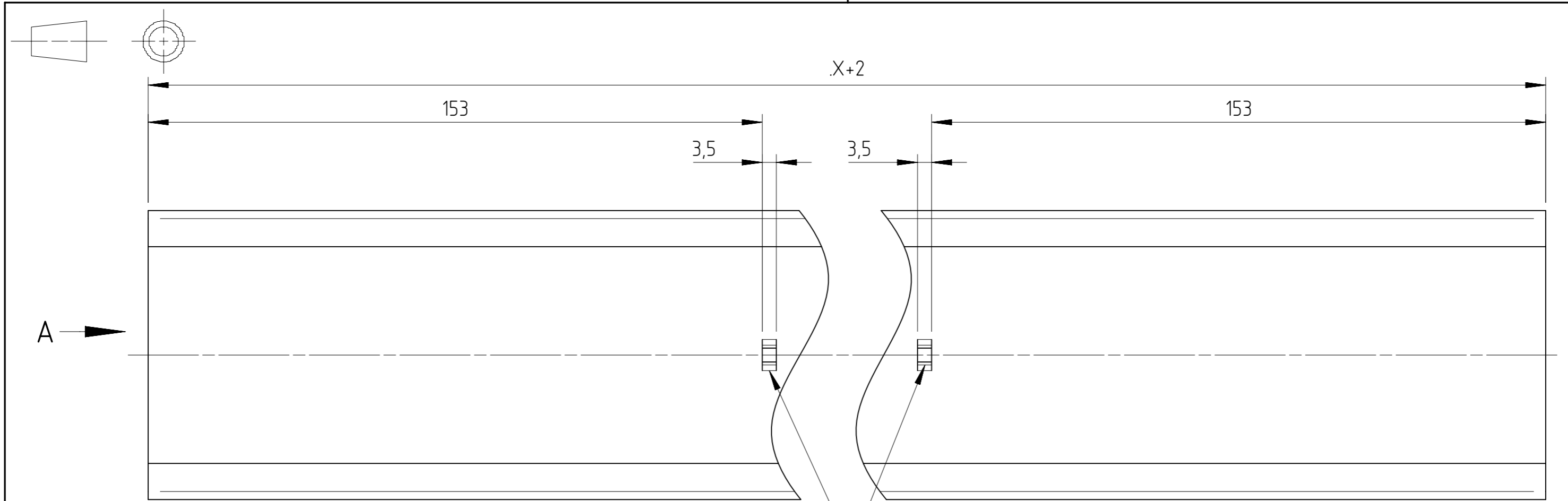



The reproduction, distribution and utilization of this document as well as the communication of its contents to others without explicit authorization are prohibited. Offenders will be held liable for the payment of damages, all rights reserved in the event of the grant of a patent, utility model or design. Copyright reserved. **Novoterm Tormatic GmbH**



14	250		0,48
13	2000		3,87
12	1750		3,39
11	760	X	1,47
10	743	X	1,44
09	975	X	1,89
08	2014		3,9
07	1764		3,41
06	1514		2,93
05	-		-
04	1245		2,4
03	1000	X	1,93
02	1915		-
01	1500		2,9
Var.	Maß "X"	Sicke	Gewicht (kg)

8	2973	25.05.2021	YK	Alle Maße in MM / all dimensions in MM	Dichtel density (g/cm³)	7,83	Gewicht / weight (g)	Masstab / scale	1:1 5:1
7	2877	16.11.2020	YK	Allgemeintoleranzen: DIN ISO 2768-m					
6	1796	21.05.2005	YK	Form und Lage: DIN ISO 2768-H					
5	1623	25.01.2006	Sob	Oberflächenzeichen: ISO 1302 R2	Werkstoff / material St 02, Z 150 NA Bezeichnung / title Laufschiene C-Profil CHANNEL				
4	1580	23.05.2005	YK	Weitere additional: DIN ISO 20457					
3	1562	19.04.2005	YK		Datum / date	Name			
2	1225	03.12.2001	YK	Erstellt created: 19.07.2000	Name: Karahan				
1	1081	06.09.2000	Sob	Geprüft checked	Zeichnung-Nr. / drawing-nr. 147662-00-1-40				
0	1060	04.08.2000	YK	Norm standard prov.					
Nr.	Index	Datum / date	Name	Freigabe release	Blatt sheet: 1/1 A3				