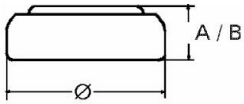


Type Number..... 20395
Designation IEC..... SR57
System..... Silver oxide/ Zinc /
 NaOH - Electrolyte



Nominal Voltage..... 1,55 V
Typical Capacity C..... 38 mAh

Temperature Ranges min max.
 Storage..... 0°C 60°C
 Discharge..... 0°C 60°C

Dimensions min max.
 Diameter..... 9,15 9,50
 Height (A/B)..... 2,40 2,70

Weight (approx.) 0,68 g

Typical Capacities (at 20°C)

Discharge Type	Load	End Voltage: 1.2V
Continuous 24h/d, 7d/w	22000 Ω	Time: 664 hours

No publication or circulation of data to third parties without consent of VARTA Consumer Batteries

All Data contained herein is for single cells For battery applications, performance data may vary from single cell data, depending on specific battery configuration