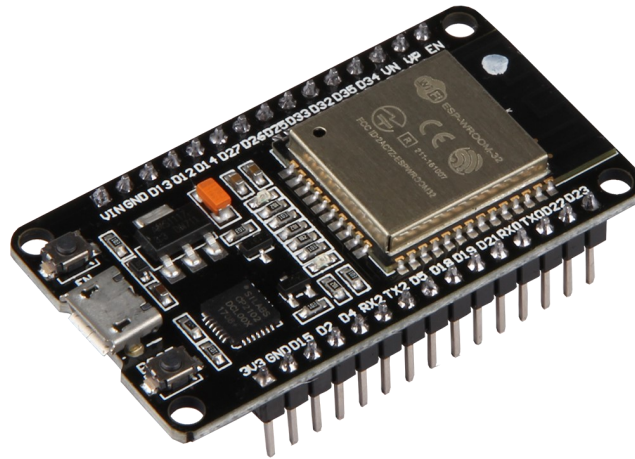


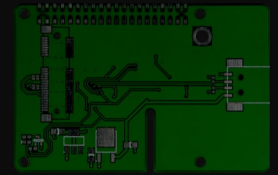
NodeMCU ESP32

Microcontroller Development Board



Technical Specifications

Model	NodeMCU ESP32
Article No.	SBC-NodeMCU-ESP32
Type	ESP32
Processor	Tensilica LX6 Dual-Core
Clock Frequency	240 MHz
SRAM	512 kB
Memory	4 MB
Wireless Standard	802.11 b/g/n
Frequency	2.4 GHz
Bluetooth	Classic / LE
Data Interfaces	UART / I2C / SPI / DAC / ADC
Operating Voltage	3,3V (operable via 5V-microUSB)
Operating Temperature	-40°C - 125°C
Dimensions (W x D x H)	48 x 26 x 11.5 mm
Scope Of Delivery	NodeMCU ESP32
EAN	4250236816104



NodeMCU ESP32

Microcontroller Development Board

An overview of the available pins can be seen in the following figure:

2x DAC	15x ADC	1x SPI
1x I ² C	2x UART	

