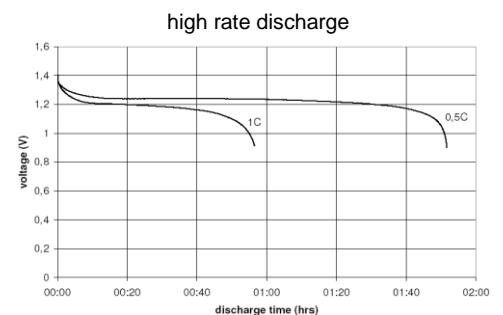
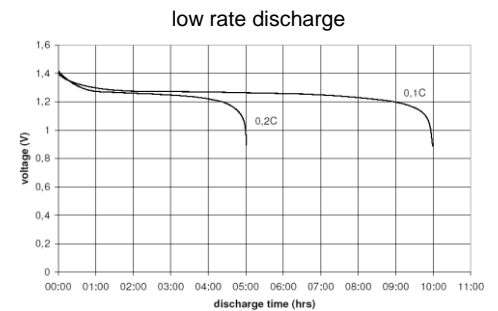
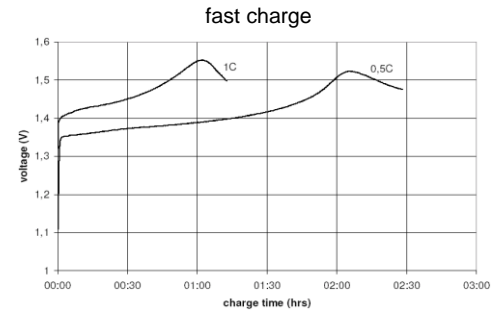
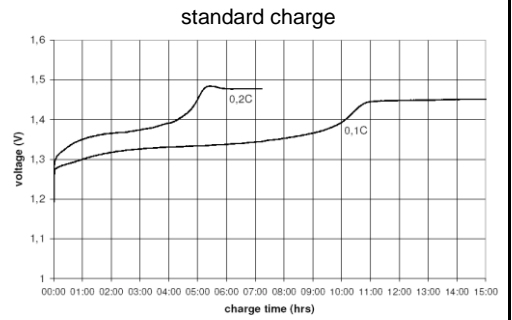


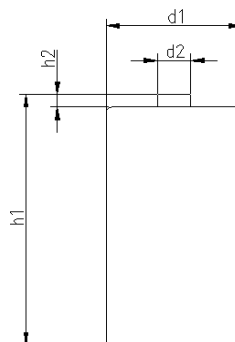
		Conditions	
cell type:	NiMH		
cell size:	D		
nominal voltage:	1.2 V		
max. charge voltage:	1.5 V	at standard charge (0.1C / 20°C)	
capacity			
nominal:	5000 mAh	discharge at 0.2C	
minimum:	5000 mAh	discharge at 0.2C	
	4500 mAh	discharge at 1C	
		1.0V end discharge voltage	
		ta: 20°C	
max. continuous discharge current:	7500 mA	ta: 0...45°C	
charge	current	time	
standard charge:	500 mA	14....16hrs	
quick charge:	1500 mA	4hrs	
fast charge:	2500 mA	2.3hrs	
recommended charge termination control parameters:	0...5 mV 0.8...1 °C 45...50 °C	- ΔV (-deltaV) temperature rise per minute TCO (temperature cut off)	
trickle charge current:	25...150 mA	(recommended)	
continuous overcharge: (less than 1 year)	≤ 500 mA	no conspicuous deformation no leakage	
internal resistance: (impedance)	≤ 30 mΩ	at 1KHz battery fully charged	
life expectancy:	≥ 500 cycles	acc. IEC standard	
self discharge			
charge retention:	≥ 80 %	after 12 months storage at 20°C	
initial capacity:	≥ 3500 mAh	within 30 days after delivery discharge at 0.2C	
ambient temperature range:	0...45 °C 10...40 °C 0...45 °C - 20...65 °C - 20...50 °C - 20...40 °C - 20...30 °C	standard charge fast charge discharge (≥1C) discharge (<1C) storage (≤3months) storage (≤6months) storage (≤24months)	
QCT1:	20/4750/20		
QCT2:	30/4500/20		

Diagrams



mechanical specifications

cell dimensions			
diameter d1:		32.8 - 1.0	mm
diameter d2:	max.	9.5	mm
height h1:		61.5 - 2.0	mm
height h2:	min.	1.5	mm
weight:		115 ± 5	g
blister card dimensions:		123 x 85	mm
blister card weight (incl. batteries):		240	g



	ANSMANN Specifications for model:	D - 5000mAh low self discharge 2pcs blister package
	data sheet no. / part no.	5030922
	supplier no.	702069
	author / date	TG / 16.09.2014