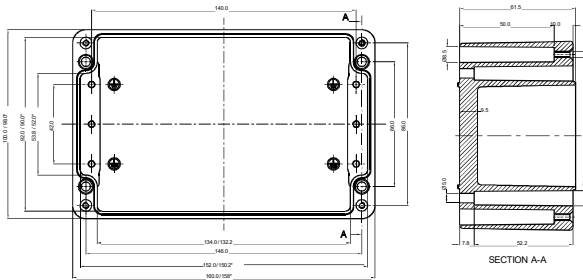


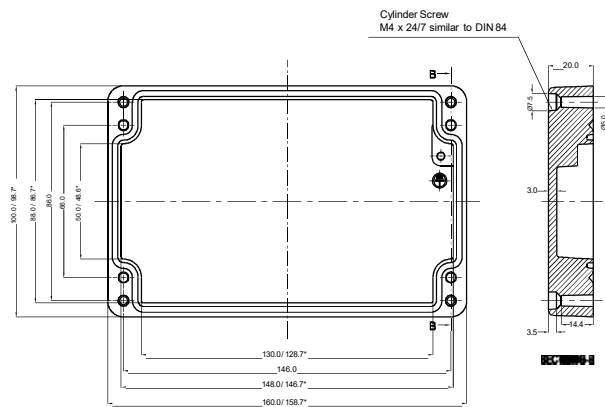
# RJ10



**BASE**



**LID**



| PRODUCT SPECIFICATION |                |
|-----------------------|----------------|
| Dim (LxWxH):          | 160 X 100 X 81 |
| Model No:             | RJ10           |
| Order No :            | RJ10           |
| Weight (gm):          | 851            |

| TECHNICAL SPECIFICATION |  |
|-------------------------|--|
| Material                | AISI 12, as per DIN EN 1706                      |
| Colour                  | RAL 7001, 7031, 7032, 7035, 7038, Black RAL 9004 |
| Protection              | IP66 as per IEC 60529                            |
| Gasket                  | Neoprene Gasket                                  |
| Lid Screw               | Stainless Steel 1.4301 (A2), captive - M4        |
| Tightening Torque       | 2 to 3 Nm  |
| Impact Strength         | Impact Energy 10 Joules - IK 09 EN 60068-2-75    |
| Service Temperature     | -60°C to +140°C                                  |
| Surface:                | Painted / Non - Painted                          |
| Components:             | Fastening threads M6 in the enclosure bottom     |
| Process Control System  | ISO 9001 - 2015, IEC 80079 - 34 - 2011           |

| AVAILABLE ON DEMAND        |  |
|----------------------------|--|
| DIN Rail                   | Yes                                    |
| Mounting Plate             | Yes                                    |
| External Mounting Brackets | Stainless Steel 1.4301 (A2)            |
| Gasket                     | Silicon / Viton / EMC                  |
| Protection                 | IP67 / IP68                            |
| Surface                    | Corrosion Protection / Special Colours |
| Hinges                     | External                               |