

D-Sub IDC

Male Connectors with Rivet UNC 4/40



SPECIFICATION:

Current rating: 1 A
 Insulation resistance: 1000 MΩ min.
 Contact resistance: 15 mΩ max.
 Dielectric voltage: 500 V AC
 Operation temperature: -25 °C to +85 °C

MATERIAL:

Insulator: PBT black UL94V-0
 Shell: Steel
 Pins: Brass

FINISH:

Contacts: Gold plated
 Shell: Nickel or tin plated

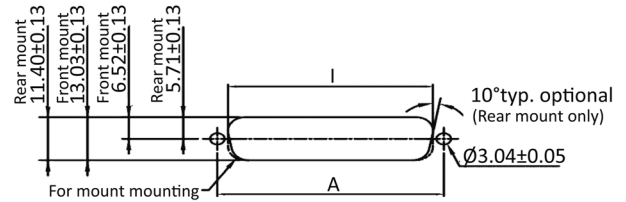
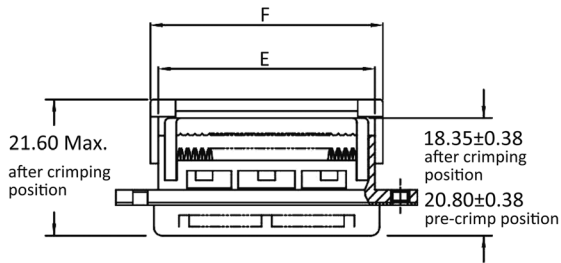
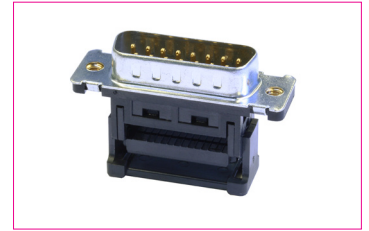
HANDLING:

Processing: IDC
 Packing: Tray

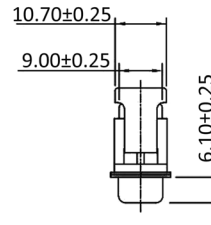
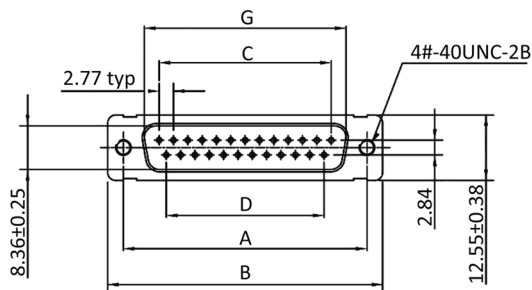
TOLERANCE:

.X ± 0.38
 .XX ± 0.25

RoHS
COMPLIANT



Recommended panel cutout dimensions



Dimensions

No. of contacts:	A:	B:	C:	D:	E:	F:	G:	I rear:	I front:
9	24.99	30.80	11.08	8.31	16.10	18.60	16.92	20.47	22.20
15	33.32	39.10	19.39	16.62	24.00	26.50	25.25	28.80	30.53
25	47.04	53.09	33.24	30.47	38.14	40.90	38.96	42.52	44.27
37	63.50	69.40	49.86	47.09	54.60	57.10	55.45	59.09	60.73

Order-Information

Identifier:	No. of contacts:	Contact Plating:	Shell:	Mounting:	Insulator Colour:
ST	#	#	#	FG	#
D-Sub Male IDC	9: 9 pin 15: 15 pin 25: 25 pin 37: 37 pin	S: Selective * G: Gold Flash A: 5 μ" Gold B: 10 μ" Gold C: 15 μ" Gold D: 30 μ" Gold	K: Metal Shell with Plastic Strain Relief * L: Plastic Shell w/o Strain Relief M: Plastic Shell with Metall Strain Relief N: Plastic Shell with Plastic Strain Relief	FG: Thread Insert UNC4-40	empty: black * GR: grey BL: blue

* = standard