

SPECIFICATION:

Current rating: 1 A
 Insulation resistance: 500 MΩ min.
 Contact resistance: 30 mΩ max.
 Dielectric voltage: 500 V AC
 Operation temperature: -40 °C to +70 °C

MATERIAL:

Insulator: PBT black UL94V-0
 Shell: Steel

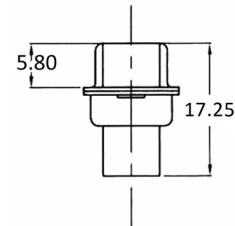
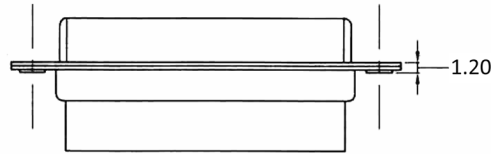
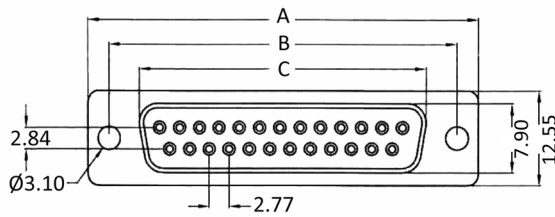
FINISH:

Shell: Tin plated

HANDLING:

Processing: Crimping
 Packing: Tray

**RoHS
COMPLIANT**



Dimensions

No. of contacts:	A:	B:	C:
9	30.85	25.00	16.40
15	39.25	33.35	24.70
25	53.10	47.04	38.52
37	69.40	63.50	54.85

Order-Information

Identifier:	No. of contacts:	Version:
BU	#	CR
D-Sub Female Housing	9: 9 pin 15: 15 pin 25: 25 pin 37: 37 pin	CR: Crimp type