

DIPIxLP

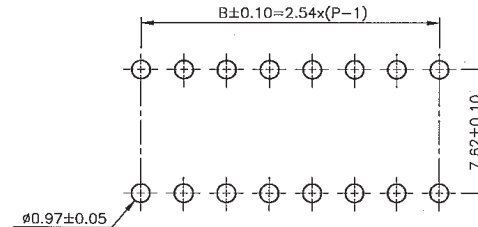
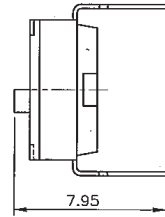
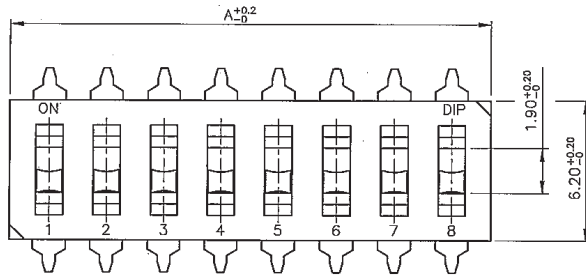
Slide Type DIP Switch

date/contact: 280911/MAP
 finishing: SNI
 last update: -
 drawing: 93769
 scale / unit: - / mm
 tolerance: -
 page: 1/1

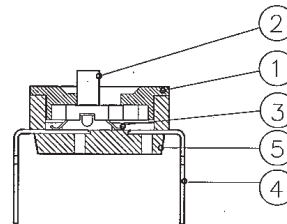
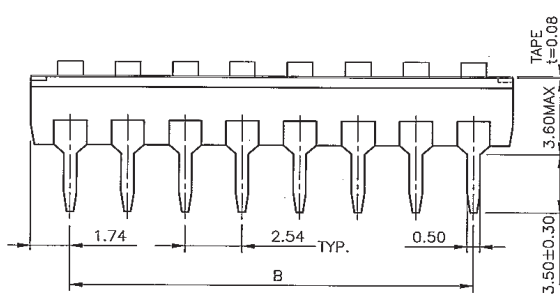
EVE GmbH
 Hollefeldstr. 16
 48282 Emsdetten
 Tel.: +49 (0) 25 72 / 93 51 - 0
 Fax: +49 (0) 25 72 / 93 51 - 24
 www.eve.de • info@eve.de



ELEKTRONIK DISTRIBUTION



P.C.B. LAYOUT



SCHEMATIC(TYP.)



Dimensions

Part No.	Dim A	Dim B
DIPI01LP	3.84	---
DIPI02LP	6.02	2.54
DIPI03LP	8.56	5.08
DIPI04LP	11.10	7.62
DIPI05LP	13.64	10.16
DIPI06LP	16.18	12.70
DIPI07LP	18.72	15.24
DIPI08LP	21.26	17.78
DIPI09LP	23.80	20.32
DIPI10LP	26.34	22.86
DIPI12LP	31.42	27.94

6	TAPE	KAPTON	1
5	BASE	HIGH TEMP THERMOPLASTIC PPS UL94-V0, BLACK	1
4	TERMINAL	BRASS, GOLD PLATED	*
3	CONTACT	ALLOY COPPER, GOLD PLATED	*
2	ACTUATOR	THERMOPLASTIC MYLON UL94-V0, WHITE	*
1	COVER	HIGH TEMP THERMOPLASTIC PPS UL94-V0, BLACK	1
NO.	PART NAME	DESCRIPTION	QTY

Order Information

Series	No. of Positions	Version
DIPI	#	LP
Slide Type DIP Switch	01 : 1	LP : Low Profile
	02 : 2	
	03 : 3	
	04 : 4	
	05 : 5	
	06 : 6	
	07 : 7	
	08 : 8	
	09 : 9	
	10 : 10	
	12 : 12	