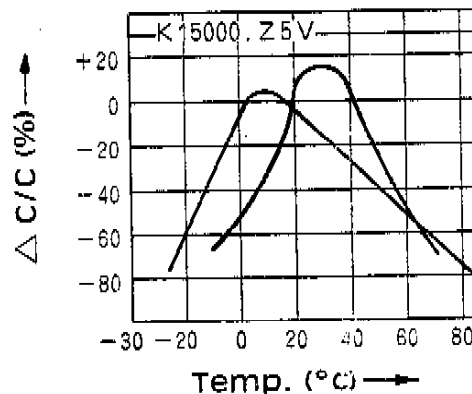
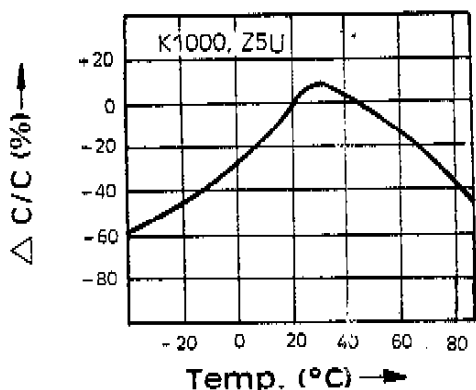
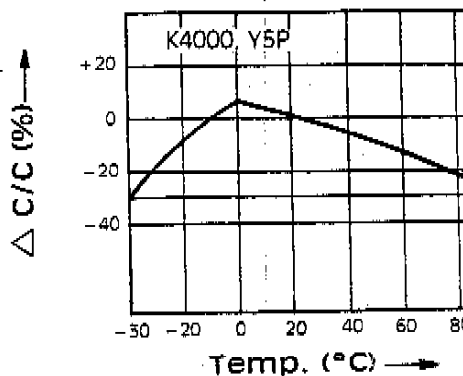
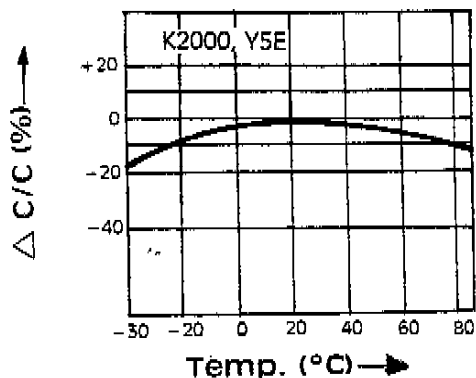
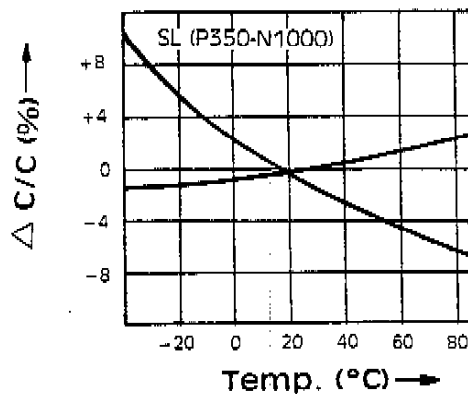
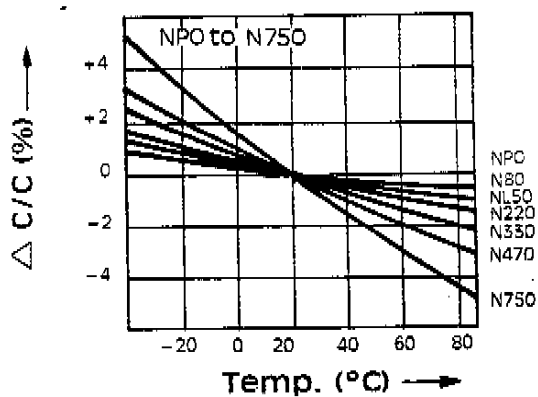
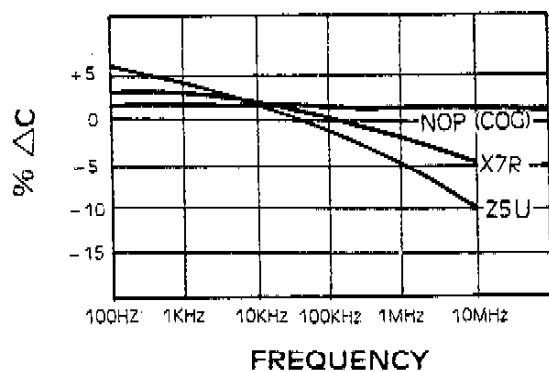




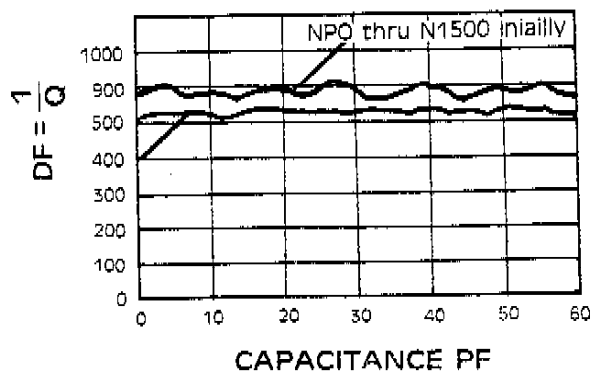
TEMPERATURE DEPENDENCY OF CAPACITANCE



△ CAPACITANCE VS, FREQUENCY



DF AND Q





DIMENSION OF D-C HIGH VOLTAGE DISC CAPACITORS

T.C W.V.DC.	B (Y5E , Y5P)	E (Z5U , Y5U)	F (Z5V)	DIAMETER (MAX)
500 V	150PF - 680PF	1000PF	2200PF	6 ϕ
	1200PF	1500PF	4700PF	7 ϕ
	1500PF	2200PF	6800PF	8 ϕ
	2200PF	4700PF	10000PF	9 ϕ
	3300PF	10000PF	—	10 ϕ
	4700PF	—	20000PF	12 ϕ
	10000PF	20300PF	33000PF	14 ϕ
	—	33000PF	47000PF	18 ϕ
1 KV	100PF - 470 PF	1000PF	1000PF	6 ϕ
	560PF - 820 PF	1500PF - 2200PF	1500PF - 2200PF	7 ϕ
	1000PF	3300PF	4700PF	8 ϕ
	1500PF	3900PF	6800PF	9 ϕ
	2200PF	4700PF	10000PF	10 ϕ
	3300PF	10000PF	15000PF	12 ϕ
	4700PF	15000PF	22000PF	14 ϕ
	6800PF	22000PF	33000PF	16 ϕ
	8200PF	33000PF	47000PF	18 ϕ
	10000PF	47000PF	100000PF	20 ϕ
2 KV	100PF - 470 PF	—	1000PF	7 ϕ
	560PF	1000PF	2200PF	8 ϕ
	820PF	1500PF	3300PF	9 ϕ
	1000PF	2200PF	4700PF	10 ϕ
	2200PF	3300PF	6800PF	12 ϕ
	3300PF	4700PF	8200PF	14 ϕ
	4700PF	6800PF - 8200PF	10000PF	16 ϕ
	5600PF - 6800PF	10000PF	22000PF	18 ϕ
	8200PF	—	—	20 ϕ
	10000PF	22000PF	47000PF	24 ϕ

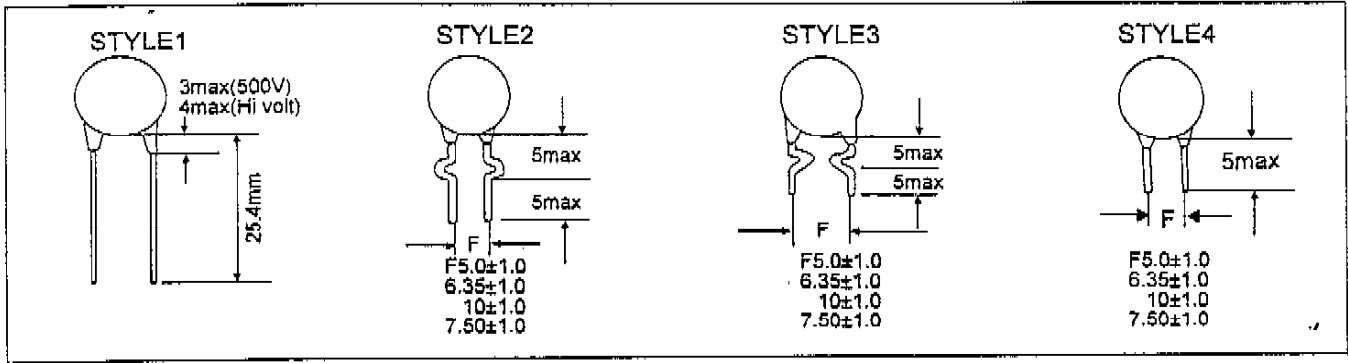


DIMENSION OF D-C HIGH VOLTAGE DISC CAPACITORS

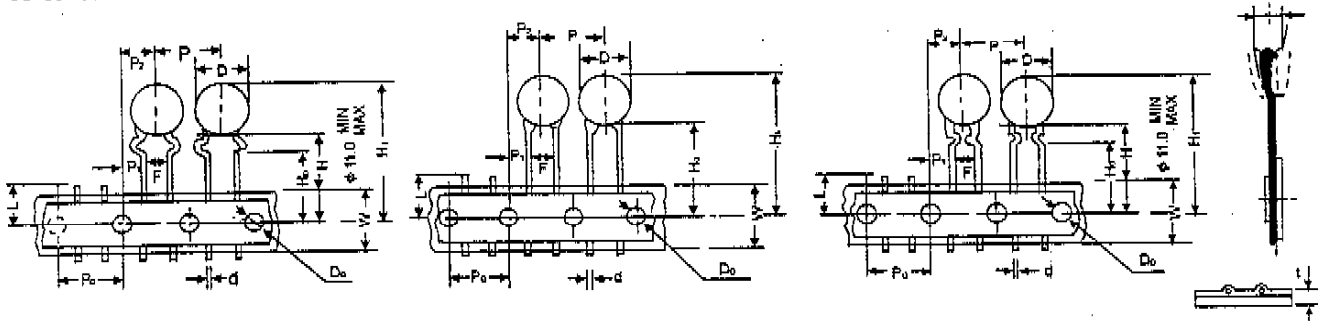
W.V.DC. \ T.C.	B (Y5E, Y5P)	E (Z5U, Y5U)	F (Z5V)	DIAMETER (MAX)
3 KV	100PF - 330PF	—	1000PF	7 ϕ
	390PF - 470PF	1000PF	1500PF	8 ϕ
	680PF	1500PF	2200PF	9 ϕ
	820PF - 1000PF	2200PF	3300PF	10 ϕ
	1500PF	3300PF	4700PF	12 ϕ
	1800PF	4700PF	5600PF	14 ϕ
	2000PF - 2700PF	5600PF	10000PF	16 ϕ
	3300PF - 3900PF	6800PF	—	18 ϕ
	4700PF	8200PF-10000PF	22000PF	20 ϕ
4 KV	100PF - 270PF	—	1000PF	8 ϕ
	330PF - 560PF	1000PF	1500PF	9 ϕ
	680PF - 820PF	1500PF	2200PF	10 ϕ
	1000PF	—	—	11 ϕ
	1200PF	2200PF	3300PF	12 ϕ
	1500PF	3300PF	4700PF	14 ϕ
	2200PF	4700PF	5600PF	16 ϕ
	—	6800PF	—	18 ϕ
	3300PF	8200PF	10000PF	20 ϕ
	4700PF	10000PF	—	22 ϕ
5 KV	220PF	—	—	8 ϕ
	270PF - 330PF	—	1000PF	9 ϕ
	470PF	1000PF	—	10 ϕ
	680PF	1500PF	1500PF	12 ϕ
	1000PF	—	1800PF	13 ϕ
	1500PF	1800PF	2200PF	15 ϕ
	2200PF	2200PF	3300PF	18 ϕ
	3300PF	—	—	22 ϕ

SPECIAL LEAD TYPE OF DISC CAPACITORS

Dimensions (Unit Millimeter)



TAPING LEAD TAPING CAPACITORS FOR AUTOMATIC INSERTION



SYMBOL	D	d	P	P ₀	P ₁	P ₂	F	H ₀	H	H ₁	D ₀	W	L	t
VALUE	MAX 11.0	0.6	12.7	12.7	3.85	6.35	5.0	16.0 18.0	20	MAX 32 25	4.0	18.0	MAX 11.0	0.7
TOLERANCE	—	+0.06 -0.05	±1	±0.2	±0.7	±1.0	±1.0	+1.5 -1.0	-1.5 -1.0	—	±0.2	±0.5	—	±0.2

PACKAGING QUANTITY:

PACKAGE	ONE BOX	CARTON BOX
PEEL PACK	2,500 PCS	25,000 PCS
ZIGZAG PACK	2,000 PCS	20,000 PCS

REEL and BOX DIMENSIONS (mm)

