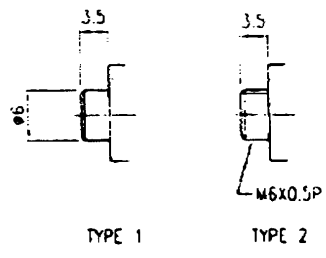
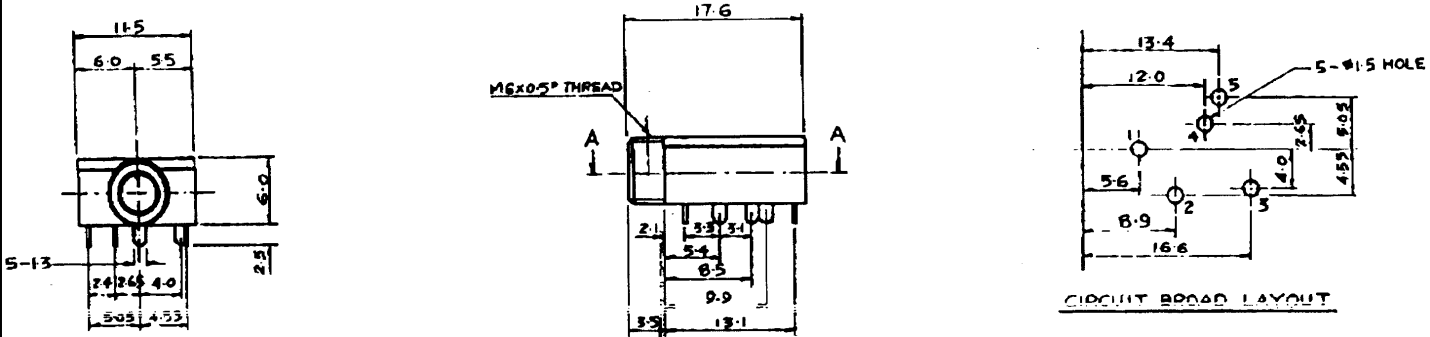


S P E C I F I C A T I O N S

RATING	DC 12V, 1A
CONTACT RESISTANCE	< 30mΩ
WITHSTAND VOLTAGE	AC 500V 1 MIN.
INSULATION RESISTANCE	> 100MΩ
INSERTION FORCE	0.4-4 KGF
WITHDRAWAL FORCE	0.4-4 KGF
CONTACT FORCE	> 100 GMF
LIFE	> 5,000 TIMES



CIRCUITRY					
SLEEVE					
TYPE 1	EJS-5-0235N	EJS-4A-0235N	EJS-4B-0235N	EJS-3-0235N	EJM-3-0235N
TYPE 2	EJS-5-0235	EJS-4A-0235	EJS-4B-0235	EJS-3-0235	EJM-3-0235